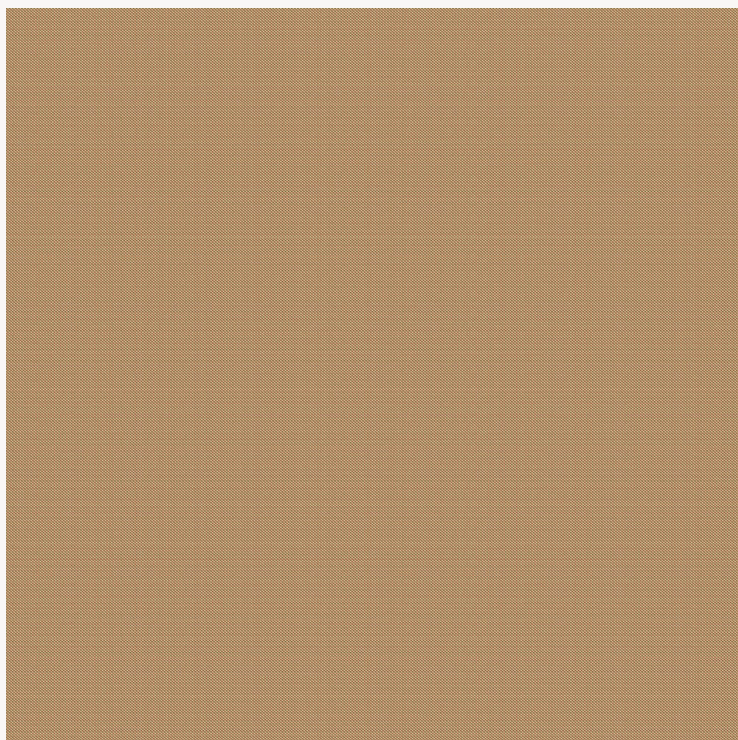


L4441_PIED_DE_POULE_B0_B67 PIED DE POULE

Edward VIII, King of England, is said to have been behind the craze for this motif in the 1930s. It became a great classic of women's and men's fashions in the following decades. A hound's foot instantly evokes distinction and elegance in the collective imagination.

L4441_PIED_DE_POULE_B0_B67 -




Raccord : Horizontal 0,5 cm / inch



Laize : 125 cm / 49,21 inch

Le manach

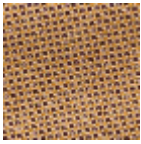
| | |
|--------------------------|--|
| TYPE | Toiles de Tours |
| DESIGN STRUCTURE | 2 Colors |
| RECOMMENDED YARNS | Nacré Chenille Bouclette |
| SPLIT YARNS | Yes |
| SALES UNIT | Available per meter |
| WIDTH | 125 cm env. / approx 49,21 inch |
| REPEAT | H: 0 cm env. - approx |
| CARE |  |

NOTES Woven in Pierre Frey's workshop in northern France. Living Heritage Mill. Requires reinforced stitching and appropriate tailoring margins

5 Colors



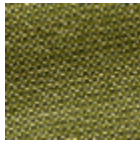
L4441_PIED_D
E_POULE_B0_
B67



L4441_PIED_D
E_POULE_B14_
B58



L4441_PIED_D
E_POULE_B23
_B76_B23_B65



L4441_PIED_D
E_POULE_C53
9_C541



L4441_PIED_D
E_POULE_N31
55_N3188