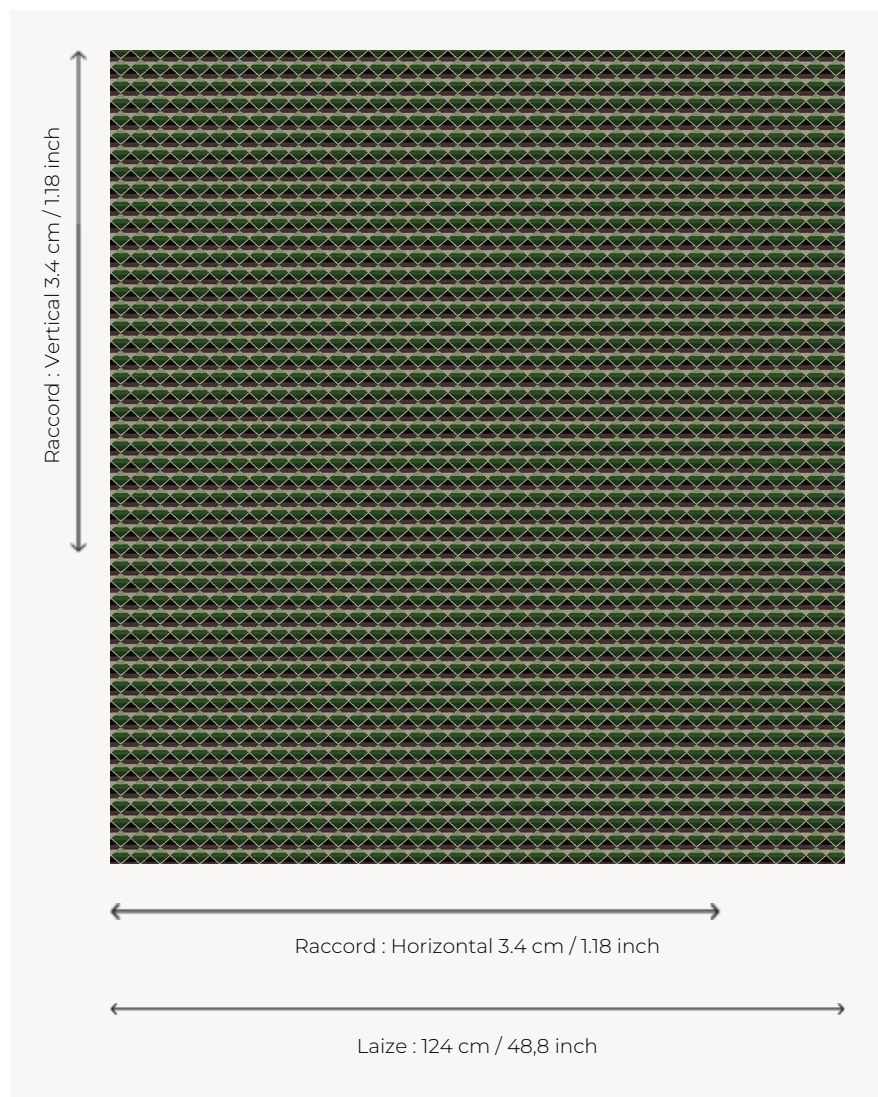


# L4449\_ARLEQUIN\_MULTICOLORE\_B54\_B93\_B70\_B57\_B58\_B56\_FE

## ARLEQUIN MULTICOLORE

Multicoloured striped variation for this motif popularized by the Commedia dell'arte.

L4449\_ARLEQUIN\_Multicolore\_B54\_B93\_B70\_B57\_B58\_B56\_FE -



### Le manach

<b>TYPE</b>	Toiles de Tours
<b>DESIGN STRUCTURE</b>	6 Colors, 1 Ground
<b>RECOMMENDED YARNS</b>	Nacré Chenille Bouclette
<b>SALES UNIT</b>	Available per meter
<b>WIDTH</b>	124 cm env. / approx 48,80 inch
<b>REPEAT</b>	H: 3 cm env. - approx 1,18 inch V: 3 cm env. - approx 1,18 inch Straight repeat

### CARE



### NOTES

Woven in Pierre Frey's workshop in northern France. Living Heritage Mill.  
Fabric coord: L4092 ARLEQUIN

## 2 Colors



L4449\_ARLEQ  
UIN\_Multicolor  
e\_B54\_B93\_B7  
0\_B57\_B58\_B5  
6\_FE



L4449\_ARLEQ  
UIN\_Multicolor  
e\_N3021\_N302  
4\_N3013\_N302  
3\_N3016\_N300  
7\_FE