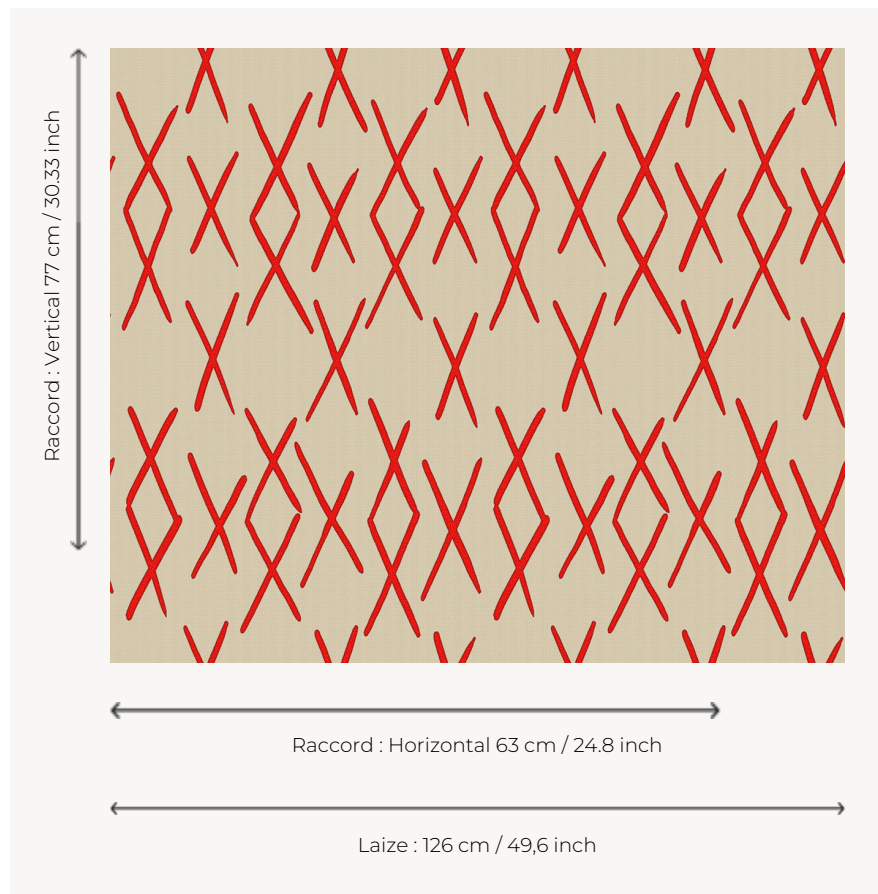


## L4517\_ZULU\_B54\_FE\_VERSO ZULU

Bicolor pattern of African influence in the line of the first Toiles de Tours published by Le Manach in 1928.

### L4517\_ZULU\_B54\_FE\_VERSO -



### Le manach

<b>TYPE</b>	Toiles de Tours
<b>DESIGN STRUCTURE</b>	1 Color, 1 Ground
<b>RECOMMENDED YARNS</b>	Nacré Chenille Bouclette
<b>SPLIT YARNS</b>	Yes
<b>REVERSIBLE</b>	Yes
<b>SALES UNIT</b>	Available per meter
<b>WIDTH</b>	126 cm env. / approx 49,60 inch
<b>REPEAT</b>	H: 63 cm env. - approx 24,80 inch V: 77 cm env. - approx 30,33 inch Straight repeat
<b>CARE</b>	
<b>NOTES</b>	Woven in Pierre Frey's workshop in northern France. Living Heritage Mill.

## 4 Colors



L4517\_ZULU\_B  
54\_FE



L4517\_ZULU\_B  
54\_FE\_VERSO



L4517\_ZULU\_C  
538\_FE



L4517\_ZULU\_C  
538\_FE\_Verso