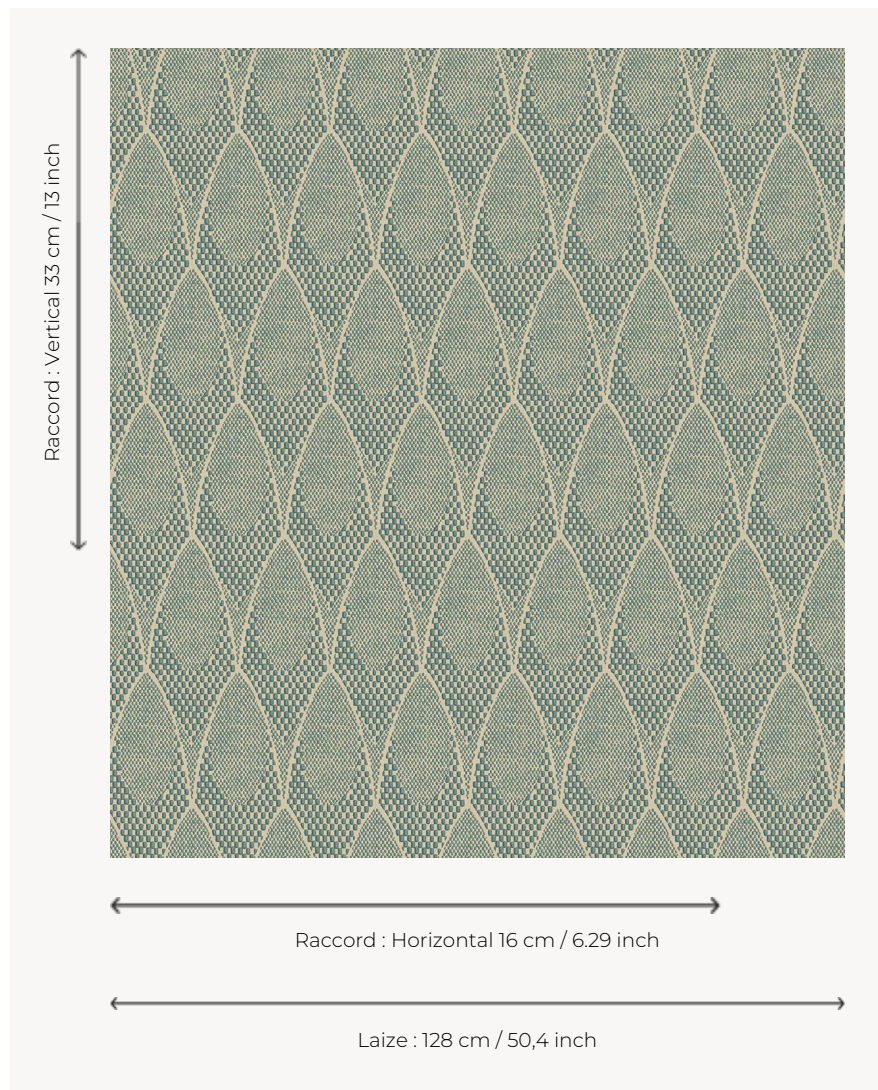


L4519_ZELDA_N3103_FE ZELDA

Contemporary pattern playing on graphic variations to create a beautiful optical effect in the Op Art spirit of the 70s.

L4519_ZELDA_N3103_FE -



Le manach

TYPE	Toiles de Tours
DESIGN STRUCTURE	1 Color, 1 Ground
RECOMMENDED YARNS	Nacré Chenille Bouclette
SPLIT YARNS	Yes
REVERSIBLE	Yes
SALES UNIT	Available per meter
WIDTH	128 cm env. / approx 50,40 inch
REPEAT	H: 16 cm env. - approx 6,29 inch V: 33 cm env. - approx 13,00 inch Straight repeat
CARE	
NOTES	Woven in Pierre Frey's workshop in northern France. Living Heritage Mill.

6 Colors



L4519_ZELDA_
B20_FE



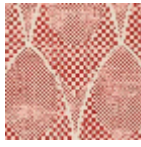
L4519_ZELDA_
B20_FE_VERS
O



L4519_ZELDA_
C537_FE



L4519_ZELDA_
C537_FE_VERS
O



L4519_ZELDA_
N3103_FE



L4519_ZELDA_
N3103_FE_VER
SO