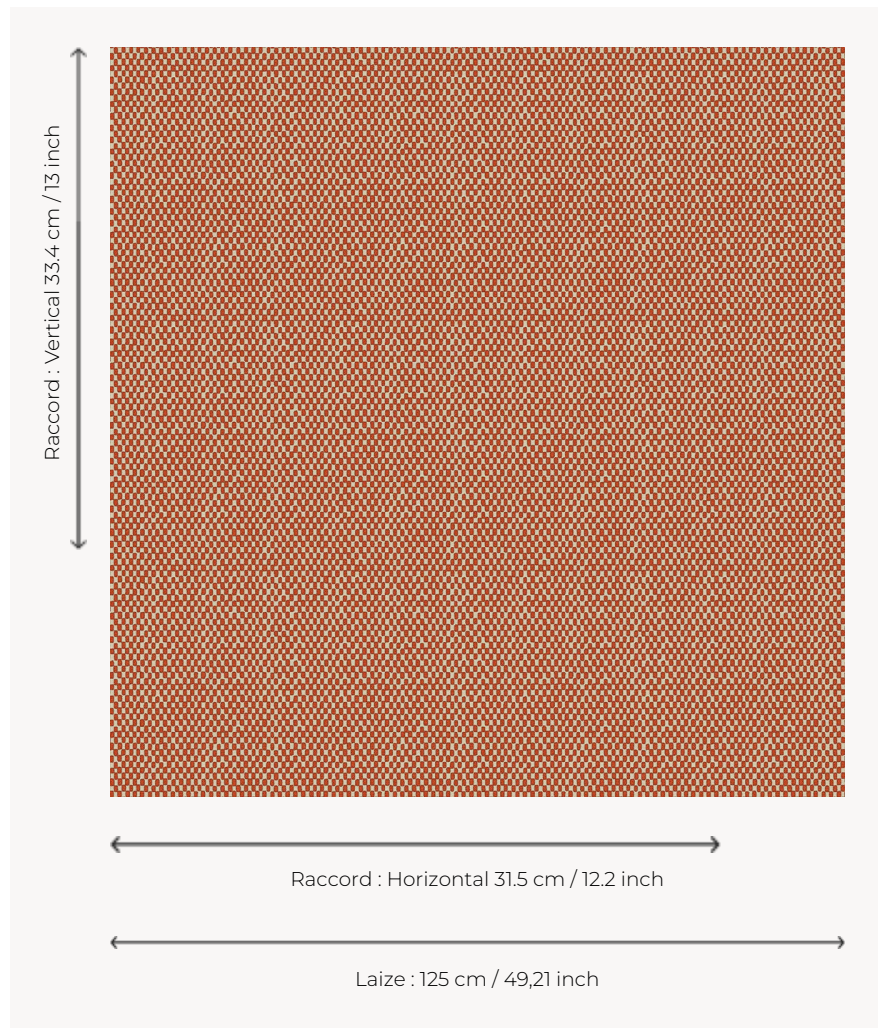


L4527_DAMIER_N3002_FE DAMIER

Timeless checkerboard that can be used in any atmosphere, both contemporary and more classical.

L4527_DAMIER_N3002_FE -



Le manach

| | |
|--------------------------|---|
| TYPE | Toiles de Tours |
| DESIGN STRUCTURE | 1 Color, 1 Ground |
| RECOMMENDED YARNS | Nacré Chenille Bouclette |
| SPLIT YARNS | Yes |
| SALES UNIT | Available per meter |
| WIDTH | 125 cm env. / approx 49,21 inch |
| REPEAT | H: 31 cm env. - approx 12,20 inch V: 33 cm env. - approx 13,00 inch Straight repeat |

CARE



NOTES

Woven in Pierre Frey's workshop in northern France. Living Heritage Mill.

3 Colors



L4527_DAMIE
R_B84_FE



L4527_DAMIE
R_C542_FE



L4527_DAMIE
R_N3002_FE