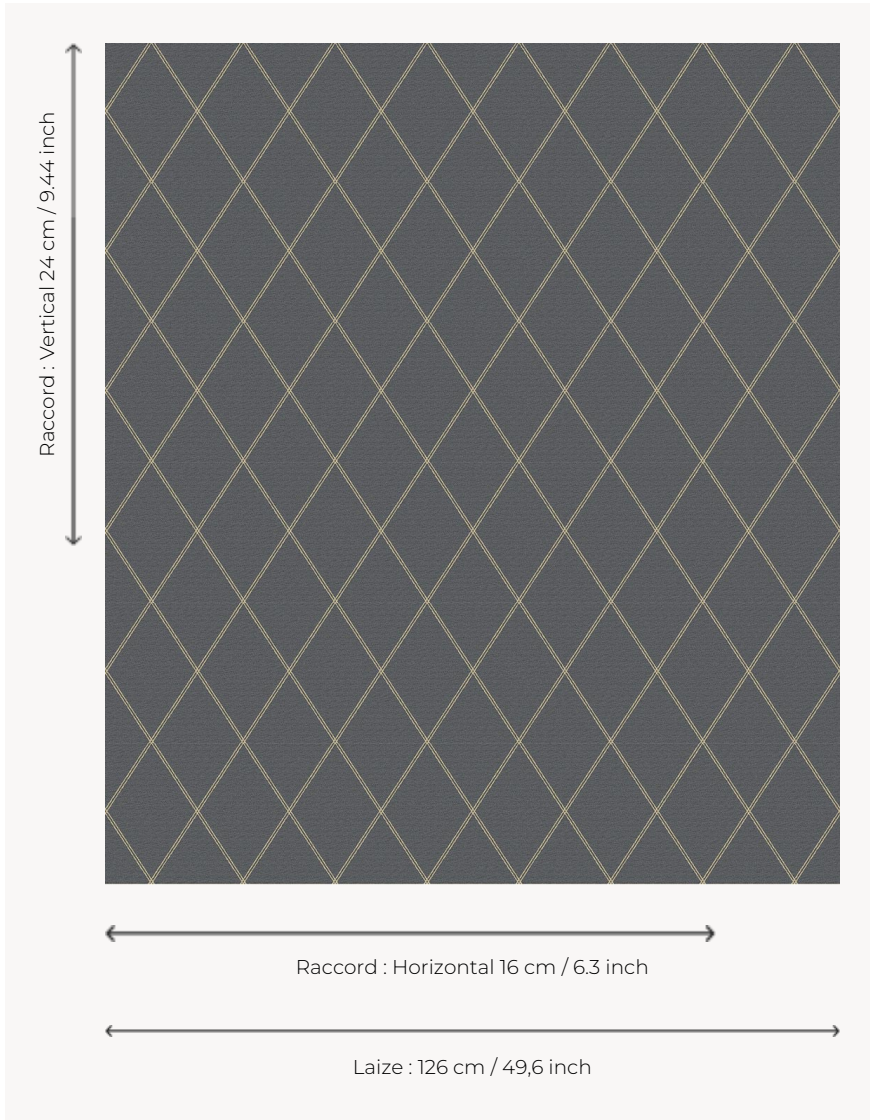


# L4530\_GRANDS\_CROISILLONS\_N3013\_FE GRANDS CROISILLONS

Elegance of the harlequin motif declined in a more contemporary two-tone version.

## L4530\_GRANDS\_CROISILLONS\_N3013\_FE -



## Le manach

<b>TYPE</b>	Toiles de Tours
<b>DESIGN STRUCTURE</b>	1 Color, 1 Ground
<b>RECOMMENDED YARNS</b>	Nacré Chenille Bouclette
<b>SPLIT YARNS</b>	Yes
<b>SALES UNIT</b>	Available per meter
<b>WIDTH</b>	126 cm env. / approx 49,60 inch
<b>REPEAT</b>	H: 16 cm env. - approx 6,30 inch V: 24 cm env. - approx 9,44 inch Straight repeat
<b>CARE</b>	

### NOTES

Woven in Pierre Frey's workshop in northern France. Living Heritage Mill.  
Fabric coord: L4344 CROISILLONS

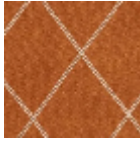
### 3 Colors



L4530\_GRAND  
S\_CROISILLON  
S\_B65\_FE



L4530\_GRAND  
S\_CROISILLON  
S\_C538\_FE



L4530\_GRAND  
S\_CROISILLON  
S\_N3013\_FE