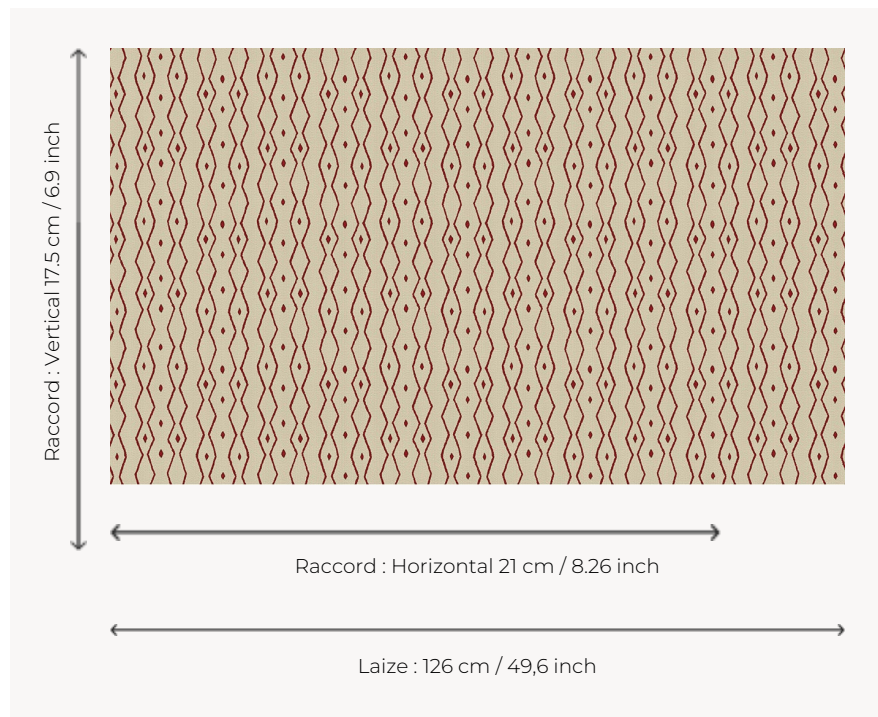


# L4535\_ZANZIBAR\_N3134\_FE ZANZIBAR

Bicolor design of African influence in the line of the first Toiles de Tours published by Le Manach in 1928.

## L4535\_ZANZIBAR\_N3134\_FE -



## Le manach

<b>TYPE</b>	Toiles de Tours
<b>DESIGN STRUCTURE</b>	1 Color, 1 Ground
<b>RECOMMENDED YARNS</b>	Nacré Chenille Bouclette
<b>SPLIT YARNS</b>	Yes
<b>REVERSIBLE</b>	Yes
<b>SALES UNIT</b>	Available per meter
<b>WIDTH</b>	126 cm env. / approx 49,60 inch
<b>REPEAT</b>	H: 21 cm env. - approx 8,26 inch V: 17 cm env. - approx 6,90 inch Straight repeat
<b>CARE</b>	
<b>NOTES</b>	Woven in Pierre Frey's workshop in northern France. Living Heritage Mill.

## 6 Colors



L4535\_ZANZIB  
AR\_B53\_FE



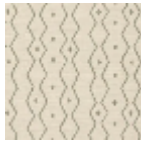
L4535\_ZANZIB  
AR\_B53\_FE\_VE  
RSO



L4535\_ZANZIB  
AR\_C512\_FE



L4535\_ZANZIB  
AR\_C512\_FE\_V  
ERSO



L4535\_ZANZIB  
AR\_N3134\_FE



L4535\_ZANZIB  
AR\_N3134\_FE\_  
VERSO