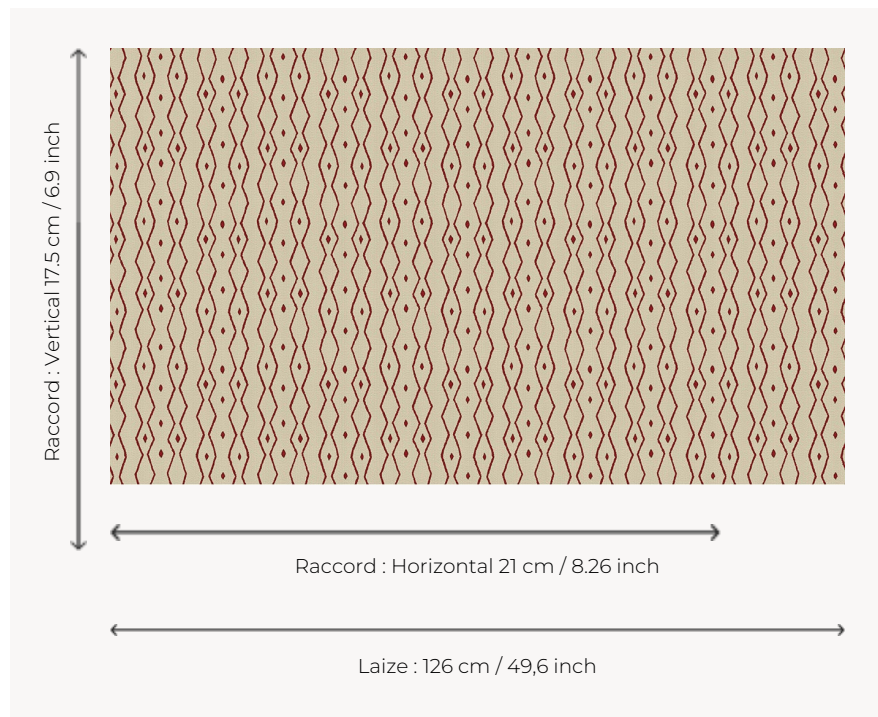



L4535_ZANZIBAR_N3134_FE_VERSO ZANZIBAR

Bicolor design of African influence in the line of the first Toiles de Tours published by Le Manach in 1928.

L4535_ZANZIBAR_N3134_FE_VERSO -



Le manach

TYPE	Toiles de Tours
DESIGN STRUCTURE	1 Color, 1 Ground
RECOMMENDED YARNS	Nacré Chenille Bouclette
SPLIT YARNS	Yes
REVERSIBLE	Yes
SALES UNIT	Available per meter
WIDTH	126 cm env. / approx 49,60 inch
REPEAT	H: 21 cm env. - approx 8,26 inch V: 17 cm env. - approx 6,90 inch Straight repeat
CARE	
NOTES	Woven in Pierre Frey's workshop in northern France. Living Heritage Mill.

6 Colors



L4535_ZANZIB
AR_B53_FE



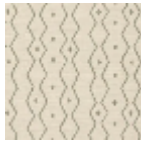
L4535_ZANZIB
AR_B53_FE_VE
RSO



L4535_ZANZIB
AR_C512_FE



L4535_ZANZIB
AR_C512_FE_V
ERSO



L4535_ZANZIB
AR_N3134_FE



L4535_ZANZIB
AR_N3134_FE_
VERSO