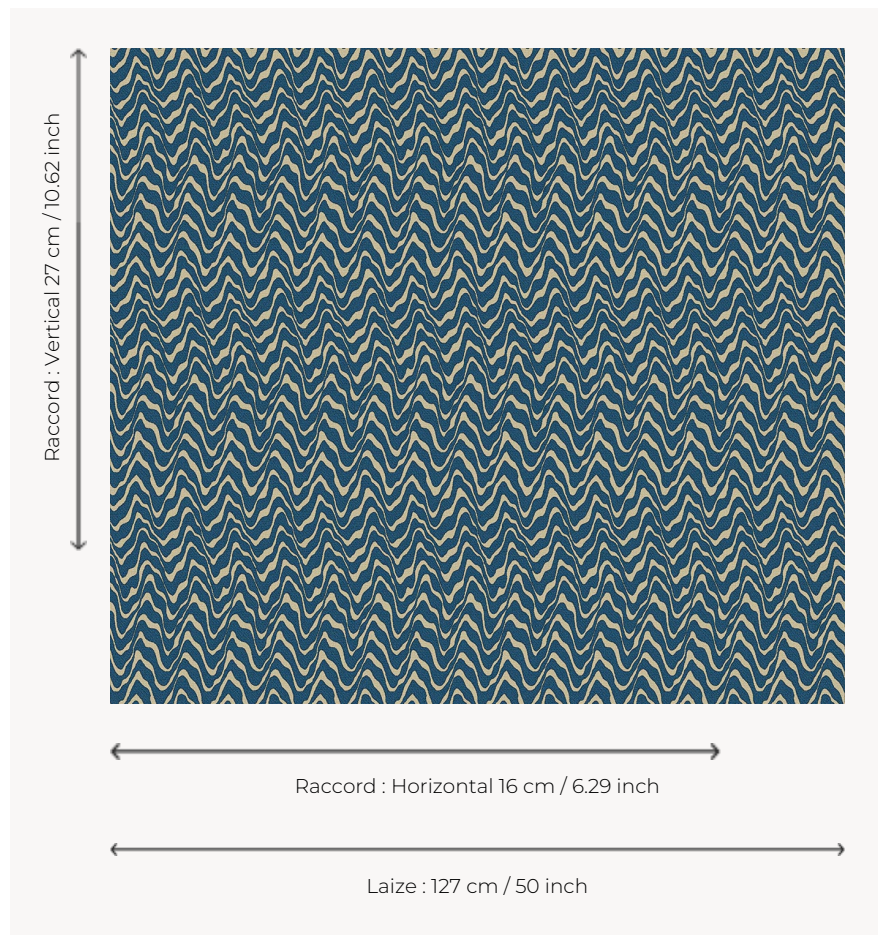


L4541_KENYA_C534_FM_VERSO KENYA

The zebra coat treated here in a contemporary version completes the range of animal skins, a theme cherished by Le Manach since the 1920s.

L4541_KENYA_C534_FM_VERSO -



Le manach

TYPE	Toiles de Tours
DESIGN STRUCTURE	1 Color, 1 Ground
RECOMMENDED YARNS	Nacré Chenille Bouclette
SPLIT YARNS	Yes
REVERSIBLE	Yes
SALES UNIT	Available per meter
WIDTH	127 cm env. / approx 50,00 inch
REPEAT	H: 16 cm env. - approx 6,29 inch V: 27 cm env. - approx 10,62 inch Straight repeat
CARE	
NOTES	Woven in Pierre Frey's workshop in northern France. Living Heritage Mill.

13 Colors



L4541_KENYA_
B21_B39_FE



L4541_KENYA_
B21_B39_FE_V
ERSO



L4541_KENYA_
B32_N3010_FE



L4541_KENYA_
C517_FE



L4541_KENYA_
C517_FE_VERS
O



L4541_KENYA_
C534_FB



L4541_KENYA_
C534_FB_VER
SO



L4541_KENYA_
C534_FM



L4541_KENYA_
C534_FM_VER
SO



L4541_KENYA_
N3176_FG



L4541_KENYA_
N3176_FG_VER
SO



L4541_KENYA_
N3176_FM



L4541_KENYA_
N3176_FM_VE
RSO