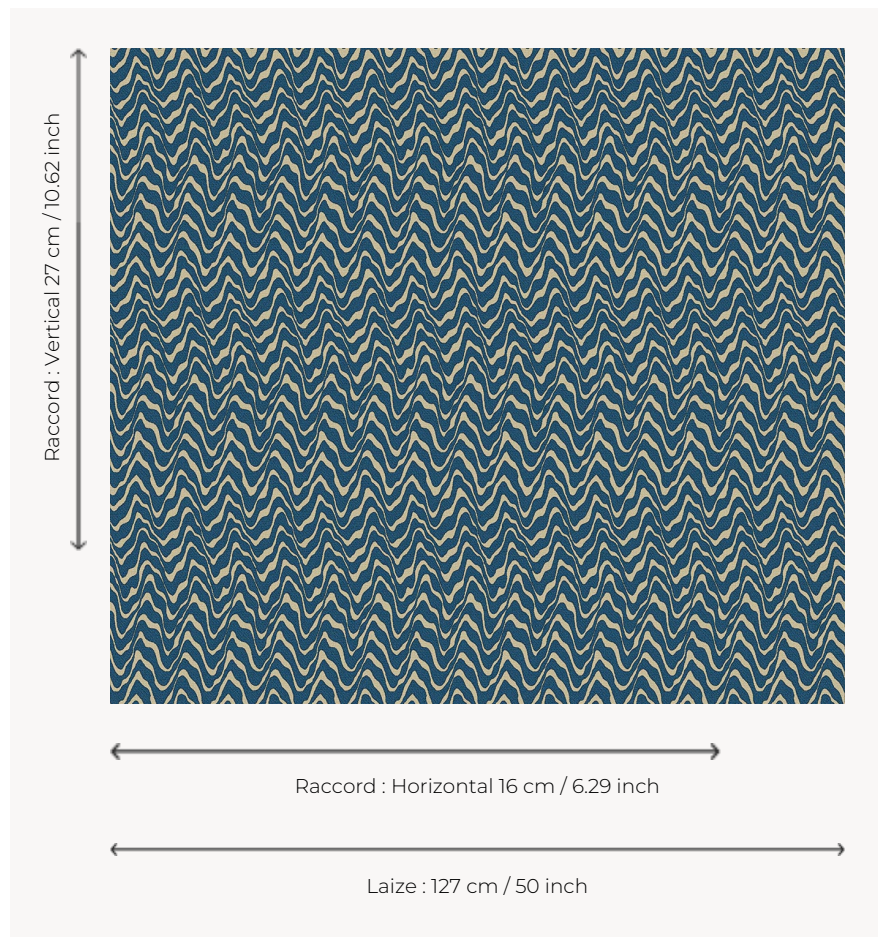



## L4541\_KENYA\_N3176\_FG\_VERSO KENYA

The zebra coat treated here in a contemporary version completes the range of animal skins, a theme cherished by Le Manach since the 1920s.

### L4541\_KENYA\_N3176\_FG\_VERSO -



### Le manach

<b>TYPE</b>	Toiles de Tours
<b>DESIGN STRUCTURE</b>	1 Color, 1 Ground
<b>RECOMMENDED YARNS</b>	Nacré Chenille Bouclette
<b>SPLIT YARNS</b>	Yes
<b>REVERSIBLE</b>	Yes
<b>SALES UNIT</b>	Available per meter
<b>WIDTH</b>	127 cm env. / approx 50,00 inch
<b>REPEAT</b>	H: 16 cm env. - approx 6,29 inch V: 27 cm env. - approx 10,62 inch Straight repeat
<b>CARE</b>	
<b>NOTES</b>	Woven in Pierre Frey's workshop in northern France. Living Heritage Mill.

# 13 Colors



L4541\_KENYA\_  
B21\_B39\_FE



L4541\_KENYA\_  
B21\_B39\_FE\_V  
ERSO



L4541\_KENYA\_  
B32\_N3010\_FE



L4541\_KENYA\_  
C517\_FE



L4541\_KENYA\_  
C517\_FE\_VERS  
O



L4541\_KENYA\_  
C534\_FB



L4541\_KENYA\_  
C534\_FB\_VER  
SO



L4541\_KENYA\_  
C534\_FM



L4541\_KENYA\_  
C534\_FM\_VER  
SO



L4541\_KENYA\_  
N3176\_FG



L4541\_KENYA\_  
N3176\_FG\_VER  
SO



L4541\_KENYA\_  
N3176\_FM



L4541\_KENYA\_  
N3176\_FM\_VE  
RSO