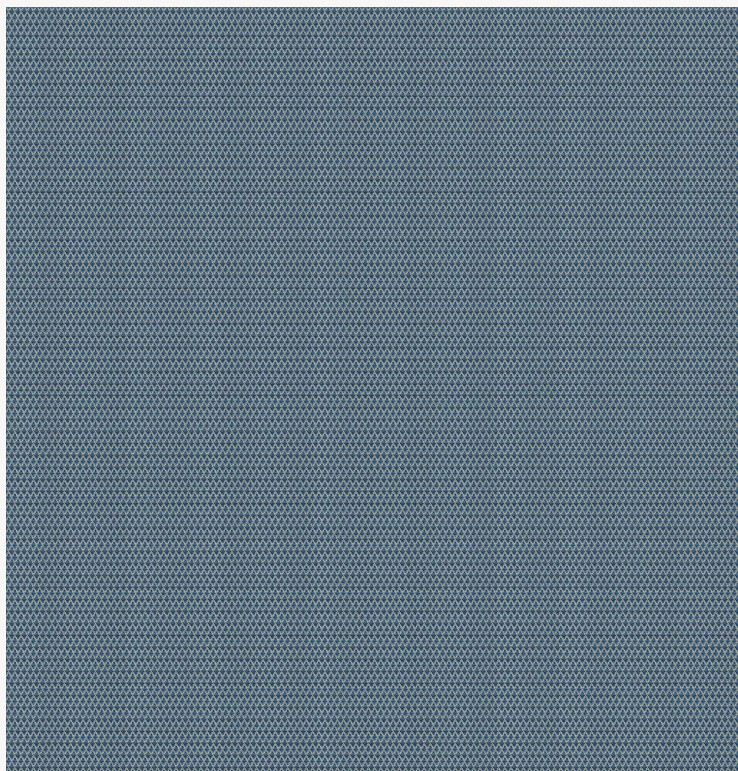


L4546_INGRID_N3013_N3169 INGRID


Contemporary interpretation of the cross, a timeless design in textile art.

L4546_INGRID_N3013_N3169 -



Laize : 128 cm / 50,4 inch

Le manach

| | |
|--------------------------|---|
| TYPE | Toiles de Tours |
| DESIGN STRUCTURE | 4 Plain colors only / 2 Split colors |
| RECOMMENDED YARNS | Nacré Chenille Bouclette |
| SPLIT YARNS | Yes |
| ARTIST | Tristan Auer |
| SALES UNIT | Available per meter |
| WIDTH | 128 cm env. / approx 50,40 inch |
| REPEAT | Straight repeat |
| CARE |  |

NOTES Woven in Pierre Frey's workshop in northern France. Living Heritage Mill. Do not use for seating

2 Colors



L4546_INGRID
_N3013_N3169



L4546_INGRID
_N3019_B38_N
3019_B38