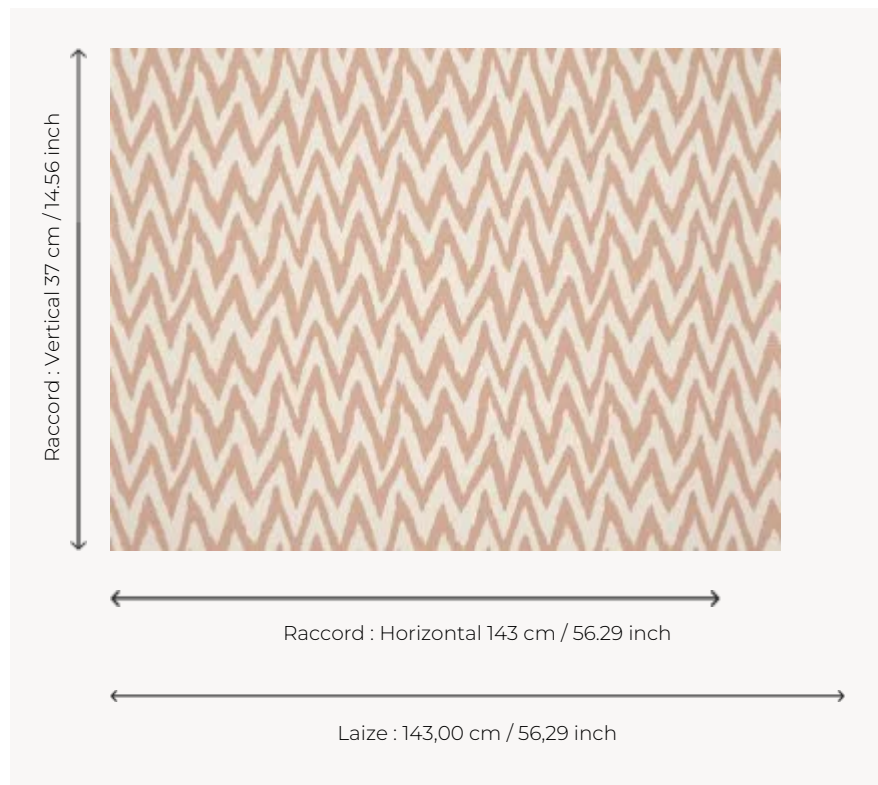


## L4563005 DAMPIERRE

This magnificent linen warp print reinterprets a Pierre Frey archive. Its nervous hand and the irregularity of its herringbones make it a fabric of great character, as singular as it is timeless.

### L4563005 - Melba



### Le manach

<b>TYPE</b>	Prints
<b>MARTINDALE</b>	< 10.000 T
<b>COMPOSITION</b>	75 % Linen - 25 % Polyester
<b>SALES UNIT</b>	Available per meter/yard
<b>WIDTH</b>	143 cm / 56,29 inch
<b>REPEAT</b>	H: 143 cm - 56,29 inch V: 37 cm - 14,56 inch Straight repeat
<b>WEIGHT</b>	380 gr / ml
<b>CARE</b>	

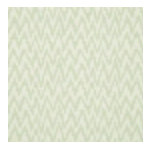
---

**CERTIFICATIONS** NFPA 260-Class 1

---

**INFORMATION** Warp printed, each pattern is different.

## 5 Colors



L4563001  
Celadon



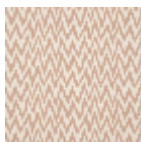
L4563002  
Sevres



L4563003  
Immortelle



L4563004  
Gorgone



L4563005  
Melba