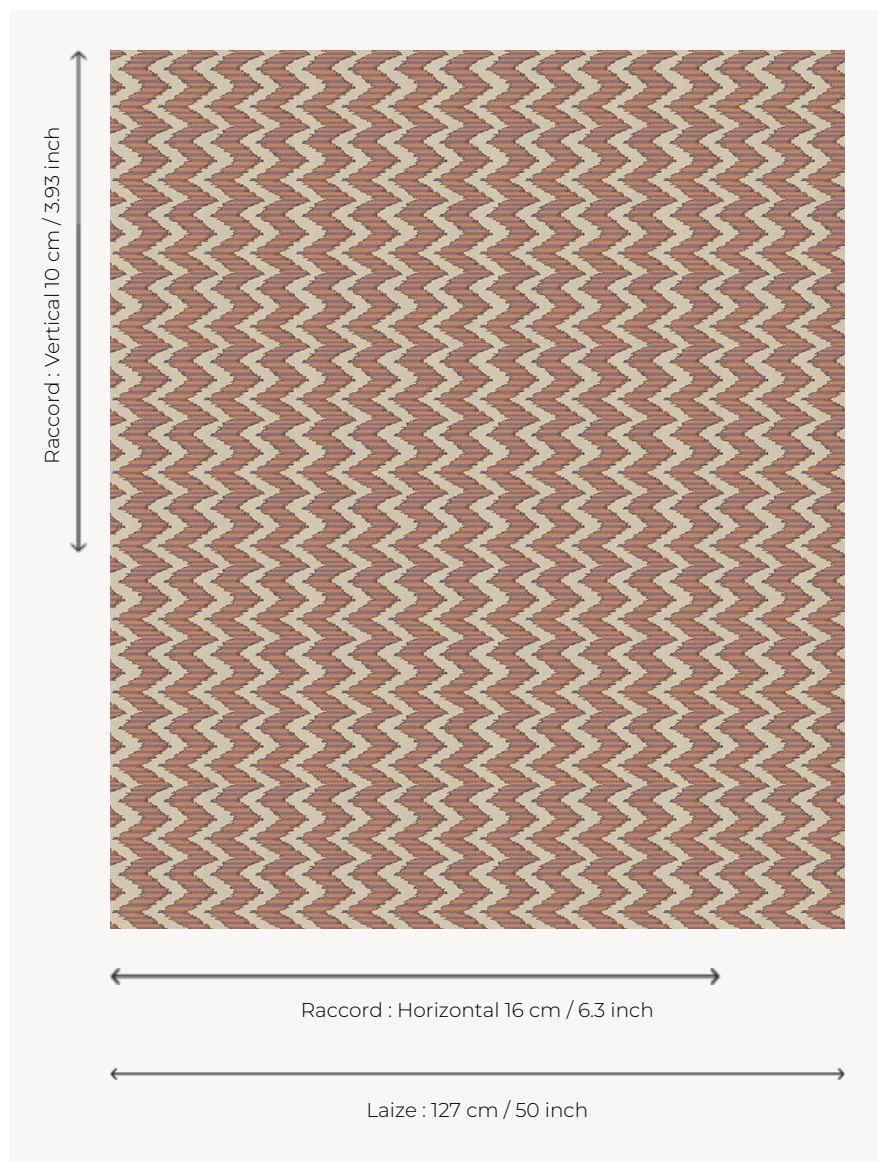


L5001_SULLY_N3139_N3004_FE SULLY

Vertical herringbone as a rework of the Hungary point or the ikat.

L5001_SULLY_N3139_N3004_FE -



Le manach

TYPE	Toiles de Tours
DESIGN STRUCTURE	2 Colors, 1 Ground
RECOMMENDED YARNS	Nacré Chenille Bouclette
SPLIT YARNS	Yes
SALES UNIT	Available per meter
WIDTH	127 cm env. / approx 50,00 inch
REPEAT	H: 16 cm env. - approx 6,30 inch V: 10 cm env. - approx 3,93 inch Straight repeat
CARE	
NOTES	Woven in Pierre Frey's workshop in northern France. Living Heritage Mill.

4 Colors



L5001_SULLY_
B21_B53_FG



L5001_SULLY_
C512_C511_FM



L5001_SULLY_
N3135_N3149_F
E



L5001_SULLY_
N3139_N3004_
FE