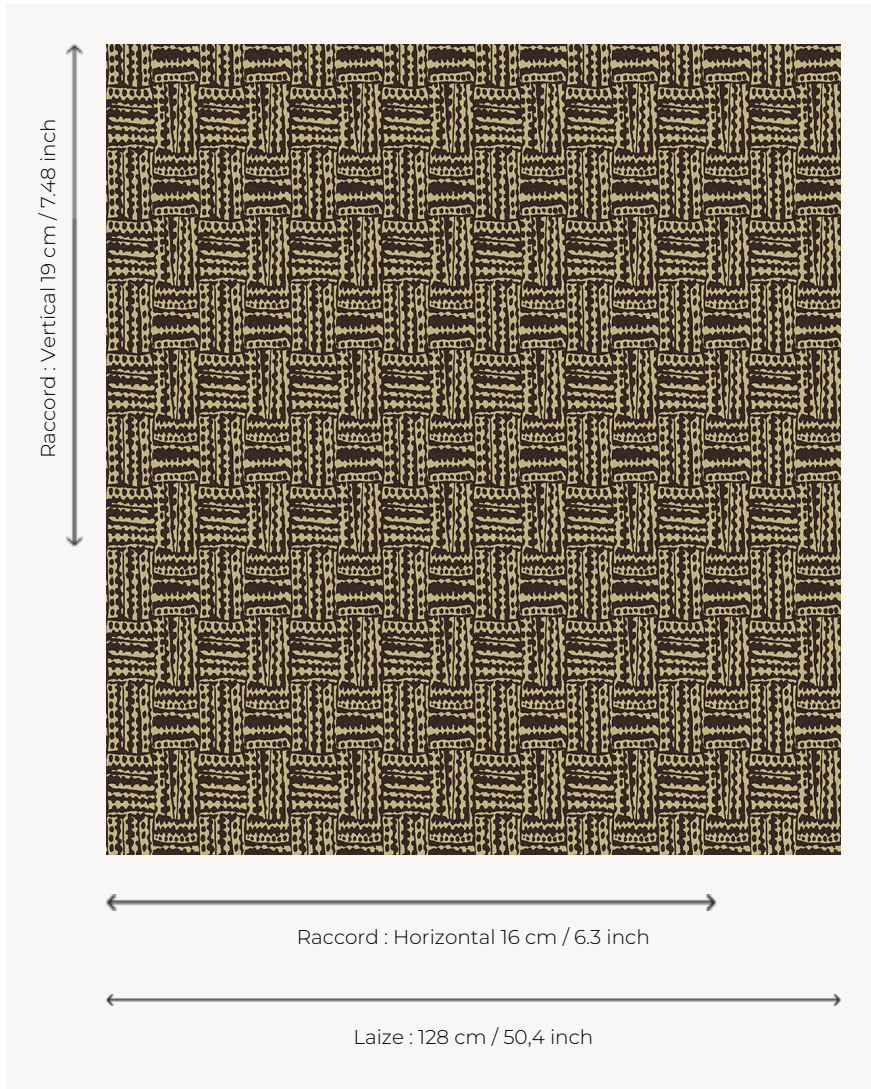


L5004_CONGO_N3010_FE CONGO

CONGO perfectly reflects the spirit of the first African Toiles de Tours published by Le Manach in 1928 while giving it a contemporary twist.

L5004_CONGO_N3010_FE -



Le manach

| | |
|--------------------------|---|
| TYPE | Toiles de Tours |
| DESIGN STRUCTURE | 1 Color, 1 Ground |
| RECOMMENDED YARNS | Nacré Chenille Bouclette |
| SPLIT YARNS | Yes |
| SALES UNIT | Available per meter |
| WIDTH | 128 cm env. / approx 50,40 inch |
| REPEAT | H: 16 cm env. - approx 6,30 inch V: 19 cm env. - approx 7,48 inch Straight repeat |
| CARE | |
| NOTES | Woven in Pierre Frey's workshop in northern France. Living Heritage Mill. |

3 Colors



L5004_CONG
O_B30_FE



L5004_CONG
O_C507_C512_
FM



L5004_CONG
O_N3010_FE