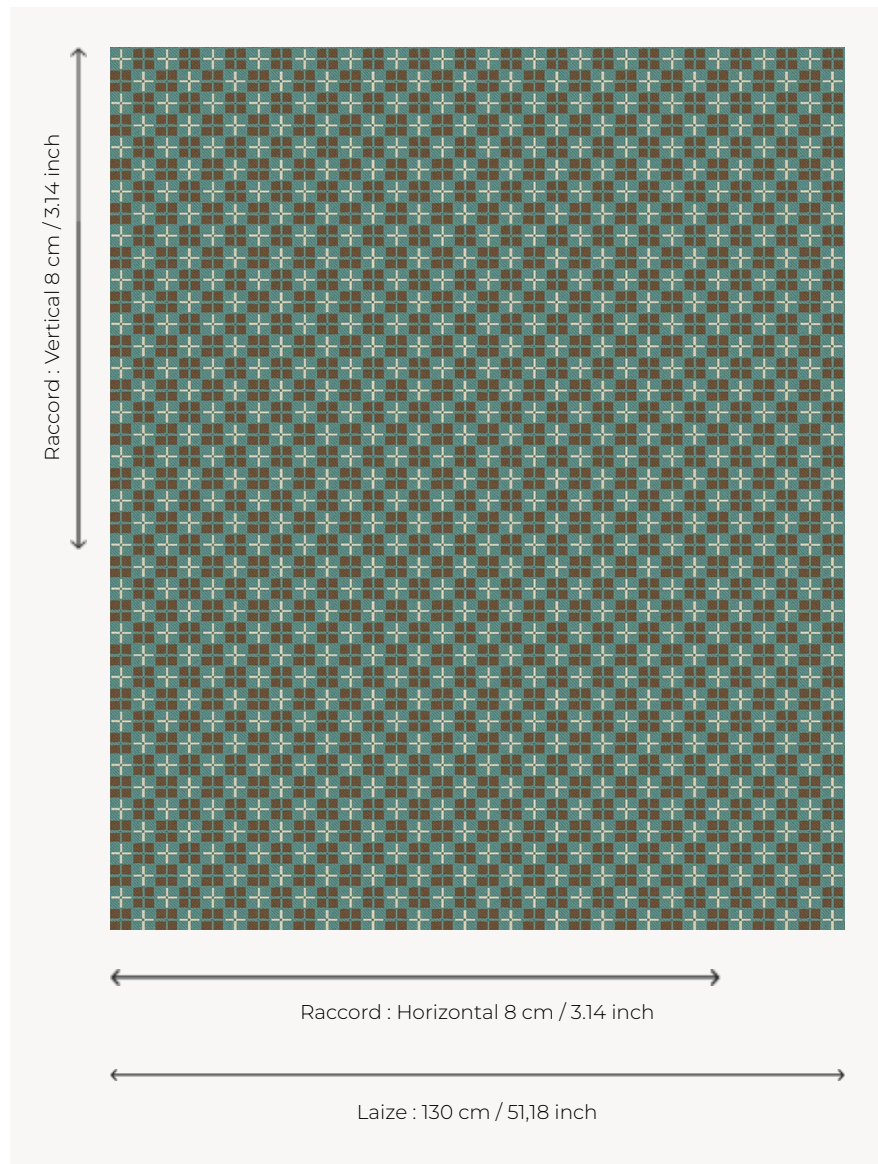


# L5005\_MOSAIQUE\_N3121\_N3129\_FE MOSAIQUE

Graphic design that recalls contemporary cement tiles.

L5005\_MOSAIQUE\_N3121\_N3129\_FE -



## Le manach

<b>TYPE</b>	Toiles de Tours
<b>DESIGN STRUCTURE</b>	2 Colors, 1 Ground
<b>RECOMMENDED YARNS</b>	Nacré Chenille Bouclette
<b>SPLIT YARNS</b>	Yes
<b>SALES UNIT</b>	Available per meter
<b>WIDTH</b>	130 cm env. / approx 51,18 inch
<b>REPEAT</b>	H: 8 cm env. - approx 3,14 inch V: 8 cm env. - approx 3,14 inch Straight repeat

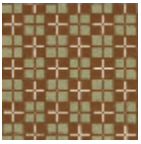
### CARE



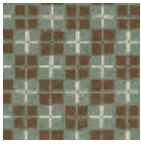
### NOTES

Woven in Pierre Frey's workshop in northern France. Living Heritage Mill.

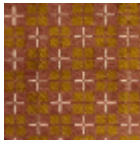
## 6 Colors



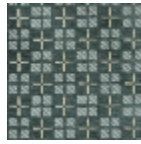
L5005\_MOSAI  
QUE\_B28\_B91\_  
FE



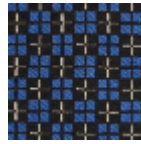
L5005\_MOSAI  
QUE\_B31\_B46\_  
FE



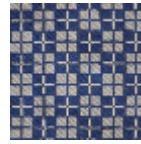
L5005\_MOSAI  
QUE\_C517\_C51  
6\_FE



L5005\_MOSAI  
QUE\_C535\_N3  
016\_FE



L5005\_MOSAI  
QUE\_N3019\_C  
508\_FE



L5005\_MOSAI  
QUE\_N3121\_N3  
129\_FE