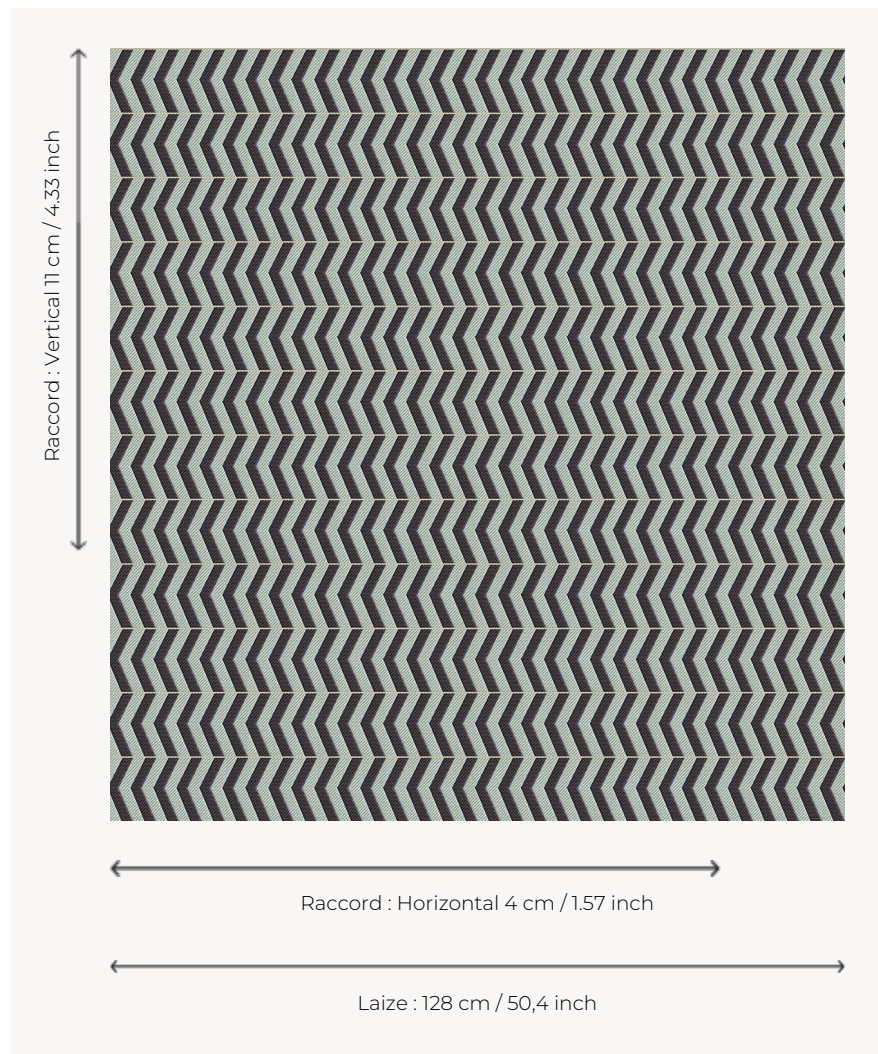


## L5006\_BOMA\_B23\_B91\_FE BOMA

Vertical herringbone crossed by a thin border to bring a contemporary twist to this very graphic pattern.

### L5006\_BOMA\_B23\_B91\_FE -



### Le manach

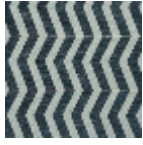
<b>TYPE</b>	Toiles de Tours
<b>DESIGN STRUCTURE</b>	2 Colors, 1 Ground
<b>RECOMMENDED YARNS</b>	Nacré Chenille Bouclette
<b>SPLIT YARNS</b>	Yes
<b>SALES UNIT</b>	Available per meter
<b>WIDTH</b>	128 cm env. / approx 50,40 inch
<b>REPEAT</b>	H: 4 cm env. - approx 1,57 inch V: 11 cm env. - approx 4,33 inch Straight repeat
<b>CARE</b>	

**NOTES** Woven in Pierre Frey's workshop in northern France. Living Heritage Mill.

## 3 Colors



L5006\_BOMA\_  
B23\_B91\_FE



L5006\_BOMA\_  
C534\_B30\_FE



L5006\_BOMA\_  
N3024\_N3022\_  
FE