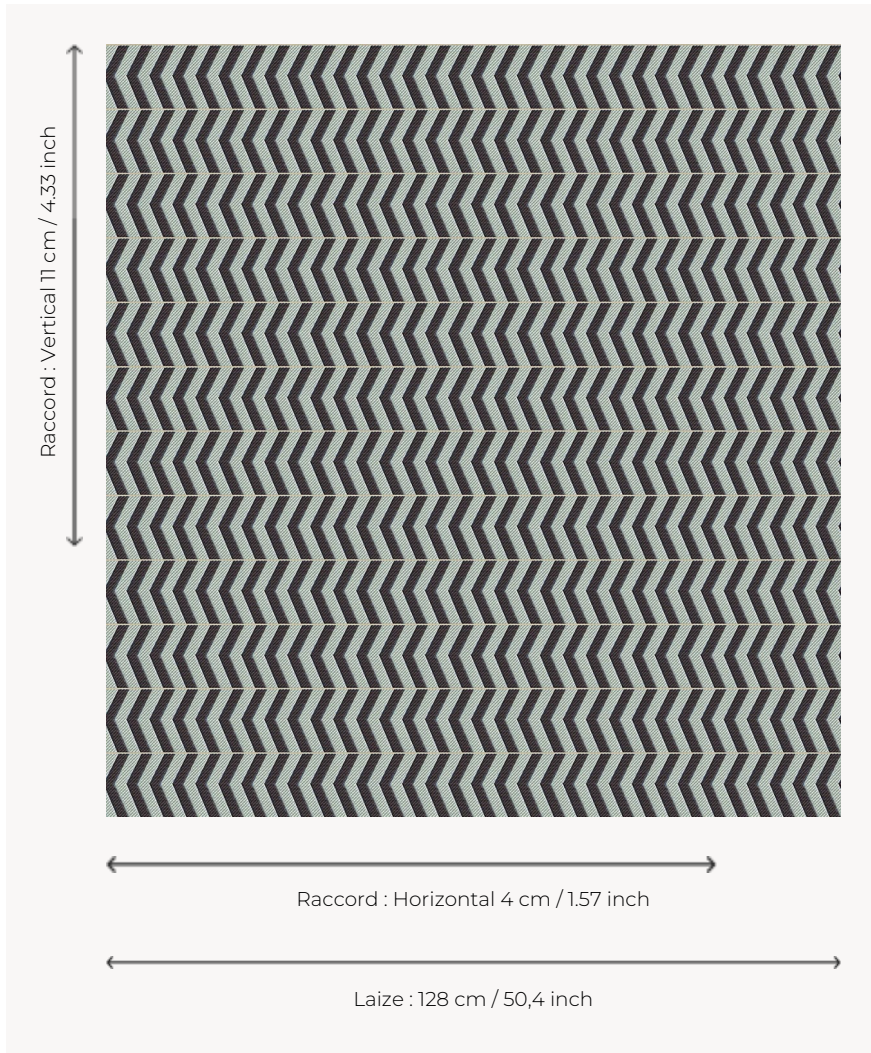


L5006_BOMA_C534_B30_FE BOMA

Vertical herringbone crossed by a thin border to bring a contemporary twist to this very graphic pattern.

L5006_BOMA_C534_B30_FE -



Le manach

| | |
|--------------------------|--|
| TYPE | Toiles de Tours |
| DESIGN STRUCTURE | 2 Colors, 1 Ground |
| RECOMMENDED YARNS | Nacré Chenille Bouclette |
| SPLIT YARNS | Yes |
| SALES UNIT | Available per meter |
| WIDTH | 128 cm env. / approx 50,40 inch |
| REPEAT | H: 4 cm env. - approx 1,57 inch V: 11 cm env. - approx 4,33 inch Straight repeat |
| CARE | |

NOTES Woven in Pierre Frey's workshop in northern France. Living Heritage Mill.

3 Colors



L5006_BOMA_
B23_B91_FE



L5006_BOMA_
C534_B30_FE



L5006_BOMA_
N3024_N3022_
FE