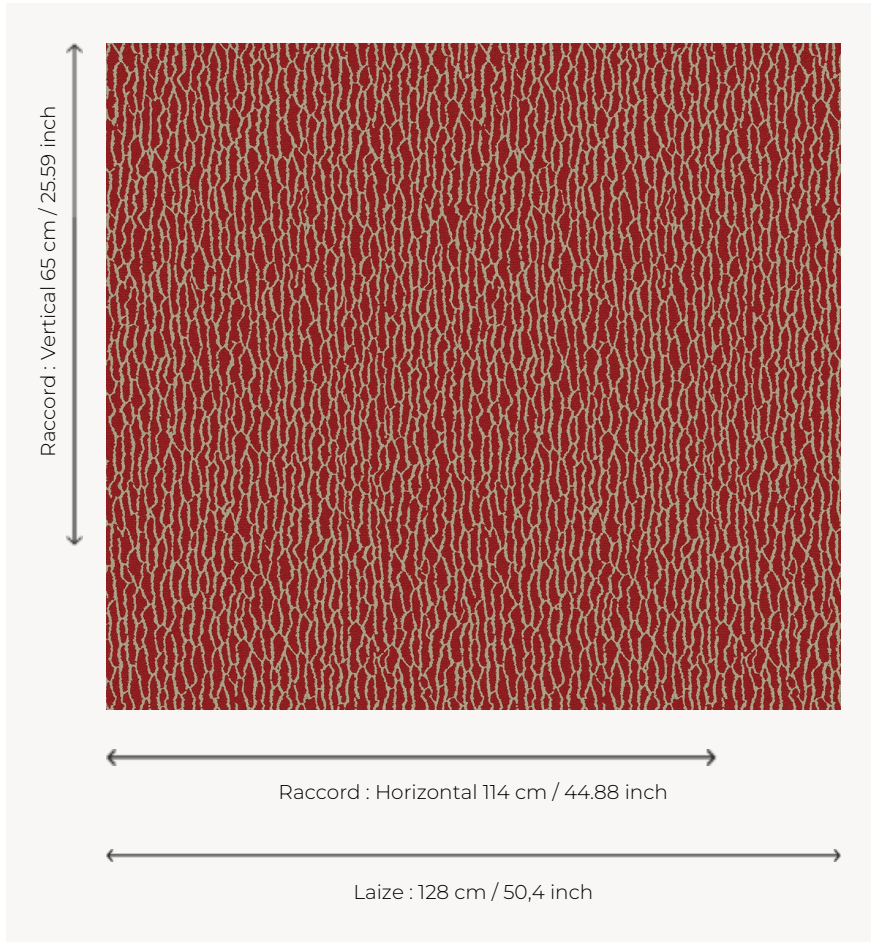


L5016_L'ANIMAL_N3137_FG L'ANIMAL

This snake skin completes the range of trompe l'oeil animal skins appreciated for decoration.

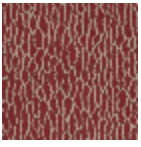
L5016_L'ANIMAL_N3137_FG -



Le manach

TYPE	Toiles de Tours
DESIGN STRUCTURE	1 Color, 1 Ground
RECOMMENDED YARNS	Nacré Chenille Bouclette
SPLIT YARNS	Yes
ARTIST	Raphaël Navot
SALES UNIT	Available per meter
WIDTH	128 cm env. / approx 50,40 inch
REPEAT	H: 114 cm env. - approx 44,88 inch V: 65 cm env. - approx 25,59 inch Straight repeat
CARE	
NOTES	Woven in Pierre Frey's workshop in northern France. Living Heritage Mill.

3 Colors



L5016_L'ANIMA
L_B84_FM



L5016_L'ANIMA
L_C510_C538_F
M



L5016_L'ANIMA
L_N3137_FG