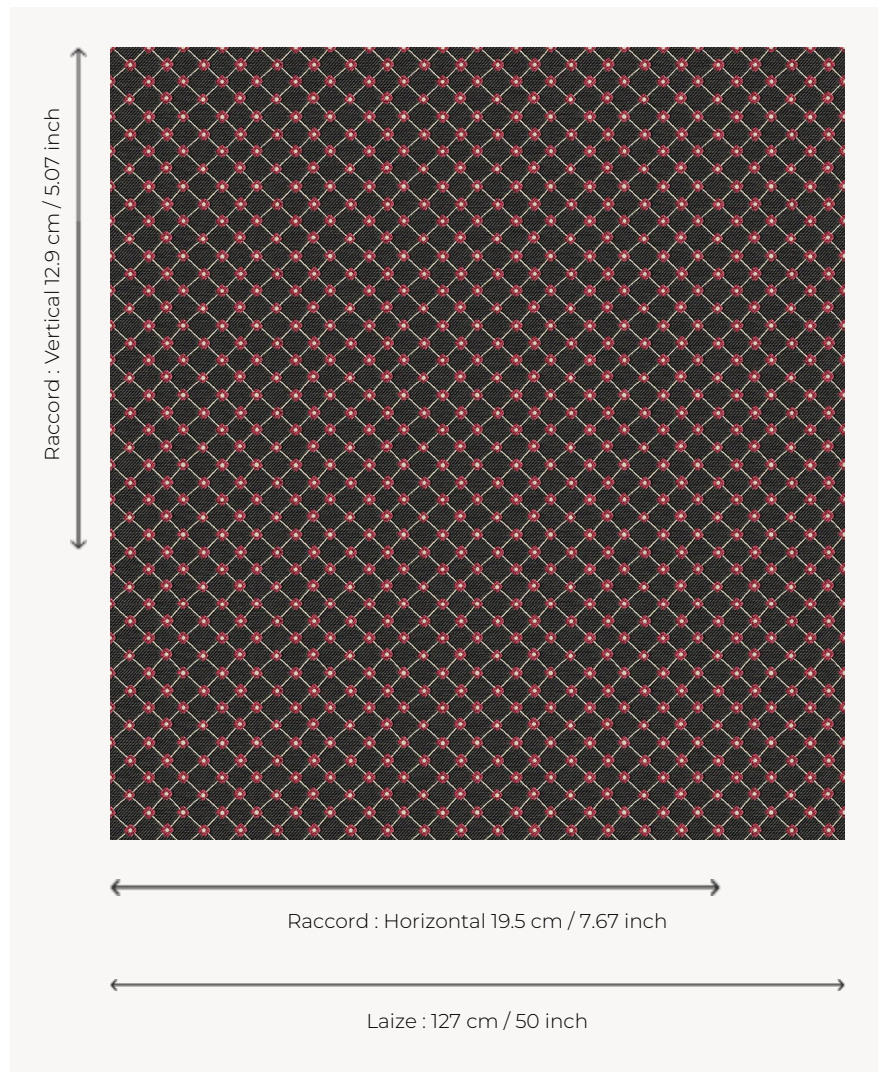


L5023_LOUISE_B54_N3013_FE LOUISE

Charming small flowered cross for a subtle and feminine decoration.

L5023_LOUISE_B54_N3013_FE -



Le manach

TYPE	Toiles de Tours
DESIGN STRUCTURE	2 Colors, 1 Ground
RECOMMENDED YARNS	Nacré Chenille Bouclette
SPLIT YARNS	Yes
SALES UNIT	Available per meter
WIDTH	127 cm env. / approx 50,00 inch
REPEAT	H: 19 cm env. - approx 7,67 inch V: 12 cm env. - approx 5,07 inch Straight repeat

CARE



NOTES

Woven in Pierre Frey's workshop in northern France. Living Heritage Mill.

4 Colors



L5023_LOUISE
_B54_N3013_F
E



L5023_LOUISE
_B90_B28_FE



L5023_LOUISE
_C527_C508_F
E



L5023_LOUISE
_N3100_N3014
_FE