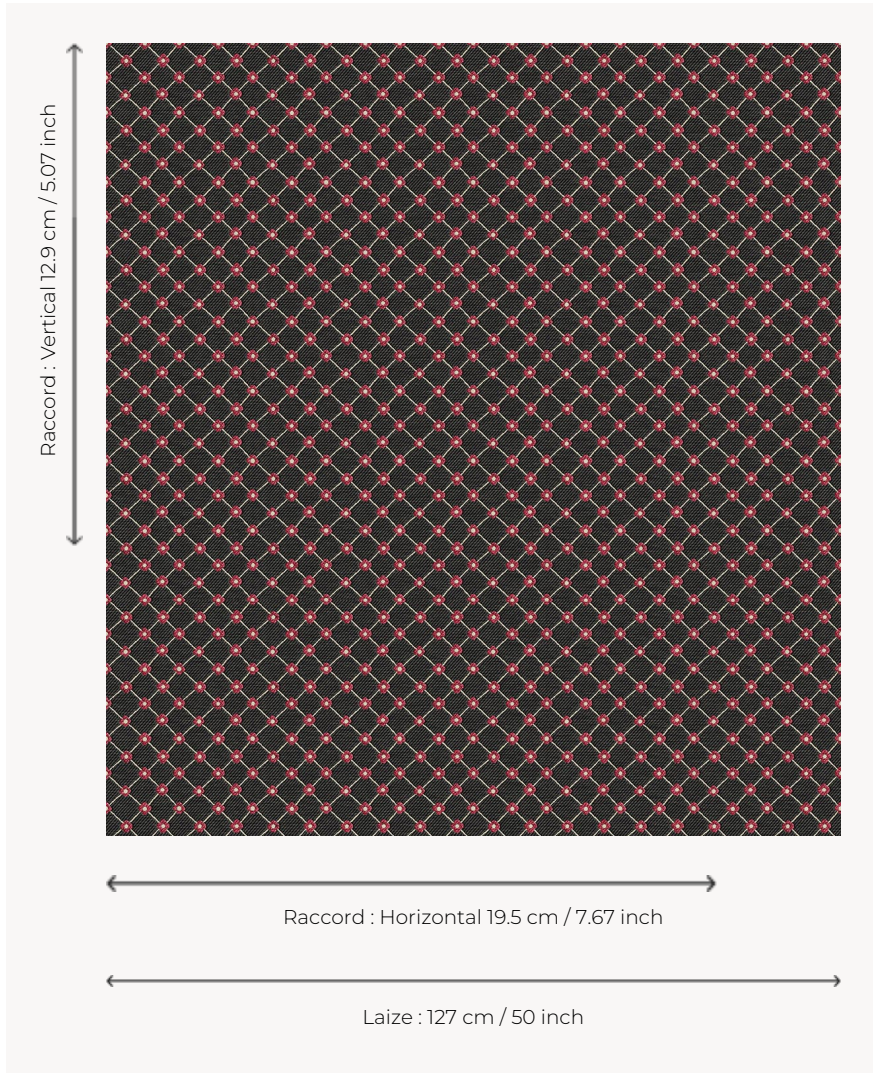


# L5023\_LOUISE\_C527\_C508\_FE LOUISE

Charming small flowered cross for a subtle and feminine decoration.

## L5023\_LOUISE\_C527\_C508\_FE -



## Le manach

<b>TYPE</b>	Toiles de Tours
<b>DESIGN STRUCTURE</b>	2 Colors, 1 Ground
<b>RECOMMENDED YARNS</b>	Nacré Chenille Bouclette
<b>SPLIT YARNS</b>	Yes
<b>SALES UNIT</b>	Available per meter
<b>WIDTH</b>	127 cm env. / approx 50,00 inch
<b>REPEAT</b>	H: 19 cm env. - approx 7,67 inch V: 12 cm env. - approx 5,07 inch Straight repeat
<b>CARE</b>	

**NOTES** Woven in Pierre Frey's workshop in northern France. Living Heritage Mill.

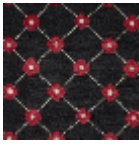
## 4 Colors



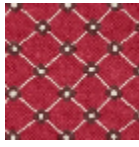
L5023\_LOUISE  
\_B54\_N3013\_F  
E



L5023\_LOUISE  
\_B90\_B28\_FE



L5023\_LOUISE  
\_C527\_C508\_F  
E



L5023\_LOUISE  
\_N3100\_N3014  
\_FE