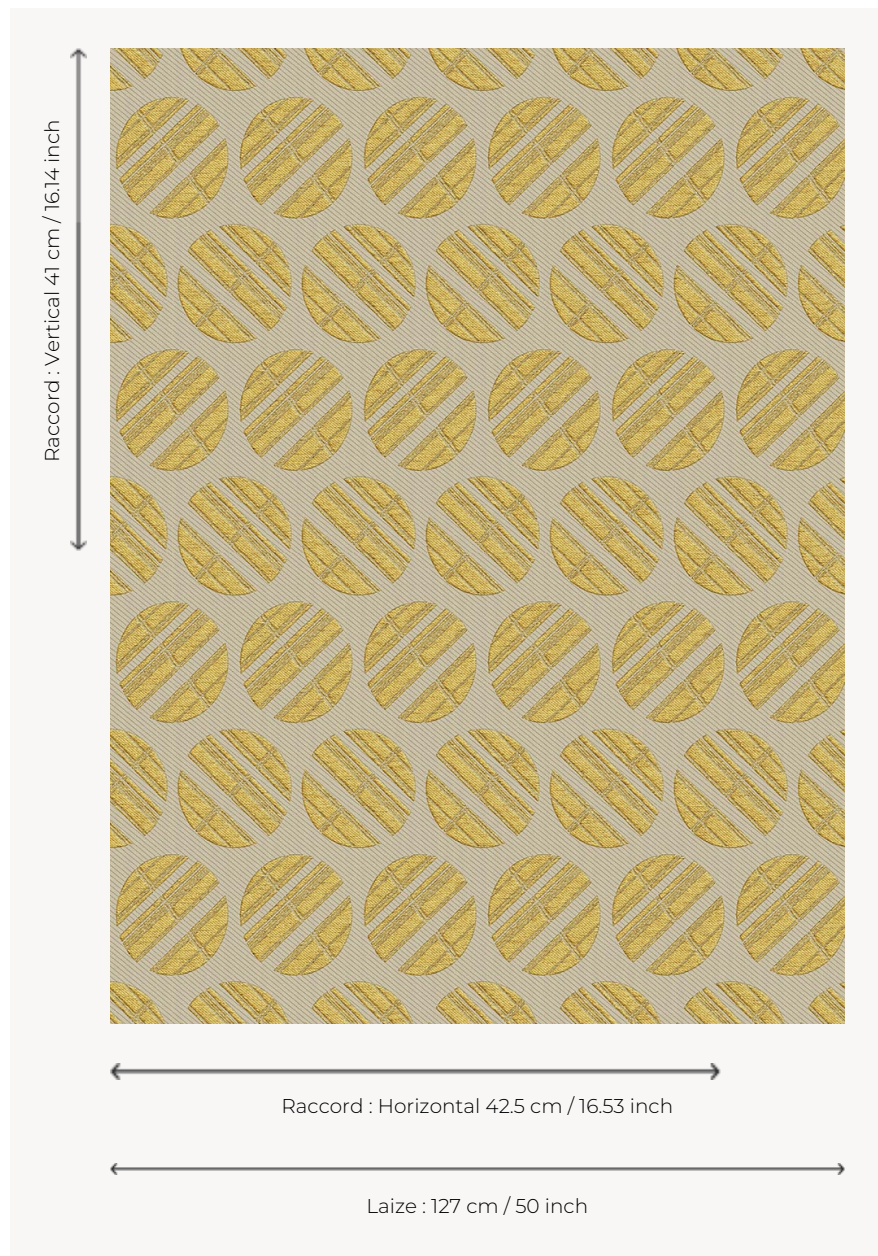


# L5024\_GRAND\_TOKYO\_B58\_FE GRAND TOKYO

A typical seventies design, this pattern is composed of superimposed rows of circles crossed by bands of varying widths.

## L5024\_GRAND\_TOKYO\_B58\_FE -



## Le manach

<b>TYPE</b>	Toiles de Tours
<b>DESIGN STRUCTURE</b>	1 Color, 1 Ground
<b>RECOMMENDED YARNS</b>	Nacré Chenille Bouclette
<b>SPLIT YARNS</b>	Yes
<b>SALES UNIT</b>	Available per meter
<b>WIDTH</b>	127 cm env. / approx 50,00 inch
<b>REPEAT</b>	H: 42 cm env. - approx 16,53 inch V: 41 cm env. - approx 16,14 inch Straight repeat
<b>CARE</b>	
<b>NOTES</b>	Woven in Pierre Frey's workshop in northern France. Living Heritage Mill.

### 3 Colors



L5024\_GRAND  
\_TOKYO\_B58\_  
\_FE



L5024\_GRAND  
\_TOKYO\_C515\_  
\_C516\_FE



L5024\_GRAND  
\_TOKYO\_N3137  
\_FE