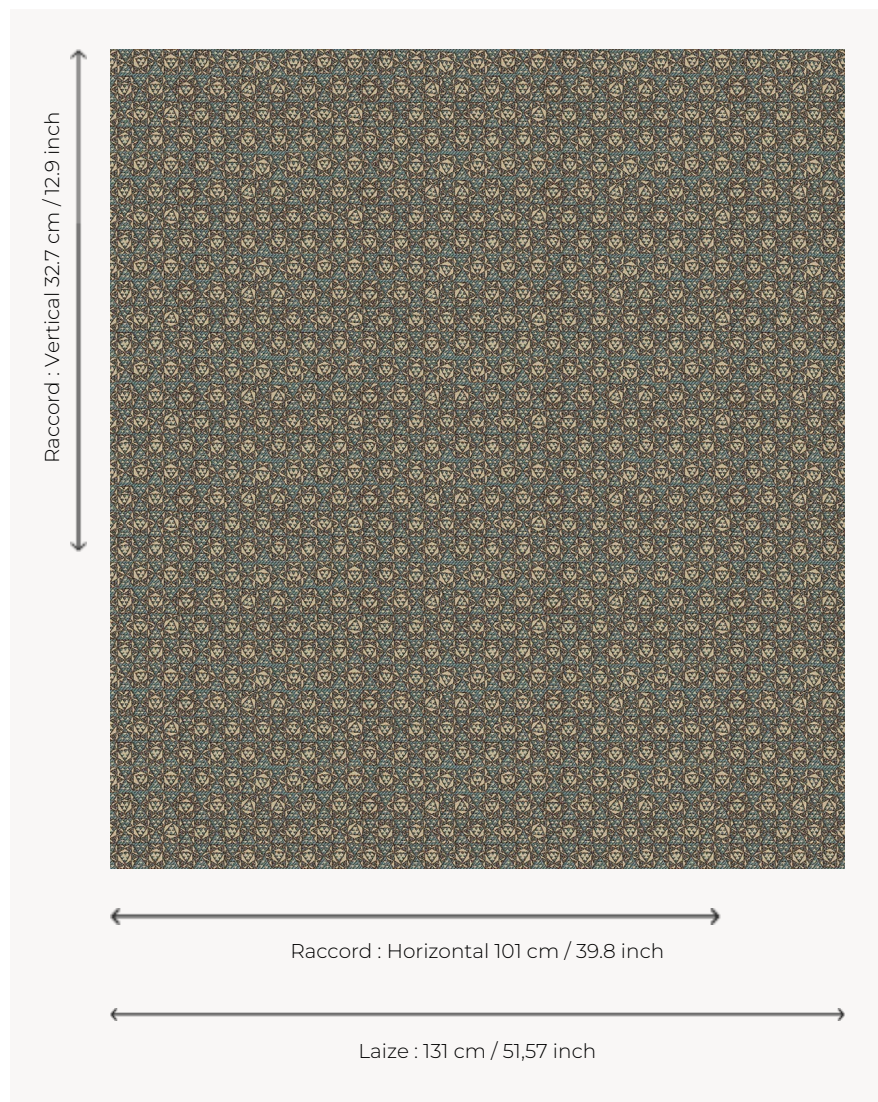


## L5025\_ISFAHAN\_B73\_B91\_B65\_B54\_FA ISFAHAN

Collaborating with the Apparatus studio, Le Manach creates a textile and modernist interpretation of the famous fine and ancestral Iranian marquetry, called Khatam, with a star motif and composed of thousands of inlaid pieces of wood, metal and camel bone.

### L5025\_ISFAHAN\_B73\_B91\_B65\_B54\_FA -



### Le manach

<b>TYPE</b>	Toiles de Tours
<b>DESIGN STRUCTURE</b>	2 Colors, 1 Ground
<b>RECOMMENDED YARNS</b>	Nacré Chenille Bouclette
<b>SPLIT YARNS</b>	Yes
<b>ARTIST</b>	Apparatus
<b>SALES UNIT</b>	Available per meter
<b>WIDTH</b>	131 cm env. / approx 51,57 inch
<b>REPEAT</b>	H: 101 cm env. - approx 39,80 inch V: 32 cm env. - approx 12,90 inch Straight repeat
<b>CARE</b>	
<b>NOTES</b>	Woven in Pierre Frey's workshop in northern France. Living Heritage Mill.

## 5 Colors



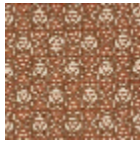
L5025\_ISFAHA  
N\_B73\_B91\_B6  
5\_B54\_FA



L5025\_ISFAHA  
N\_C504\_B71\_F  
G



L5025\_ISFAHA  
N\_C535\_N3158  
\_FE



L5025\_ISFAHA  
N\_N3013\_N302  
1\_FE



L5025\_ISFAHA  
N\_N3137\_N315  
9\_FG