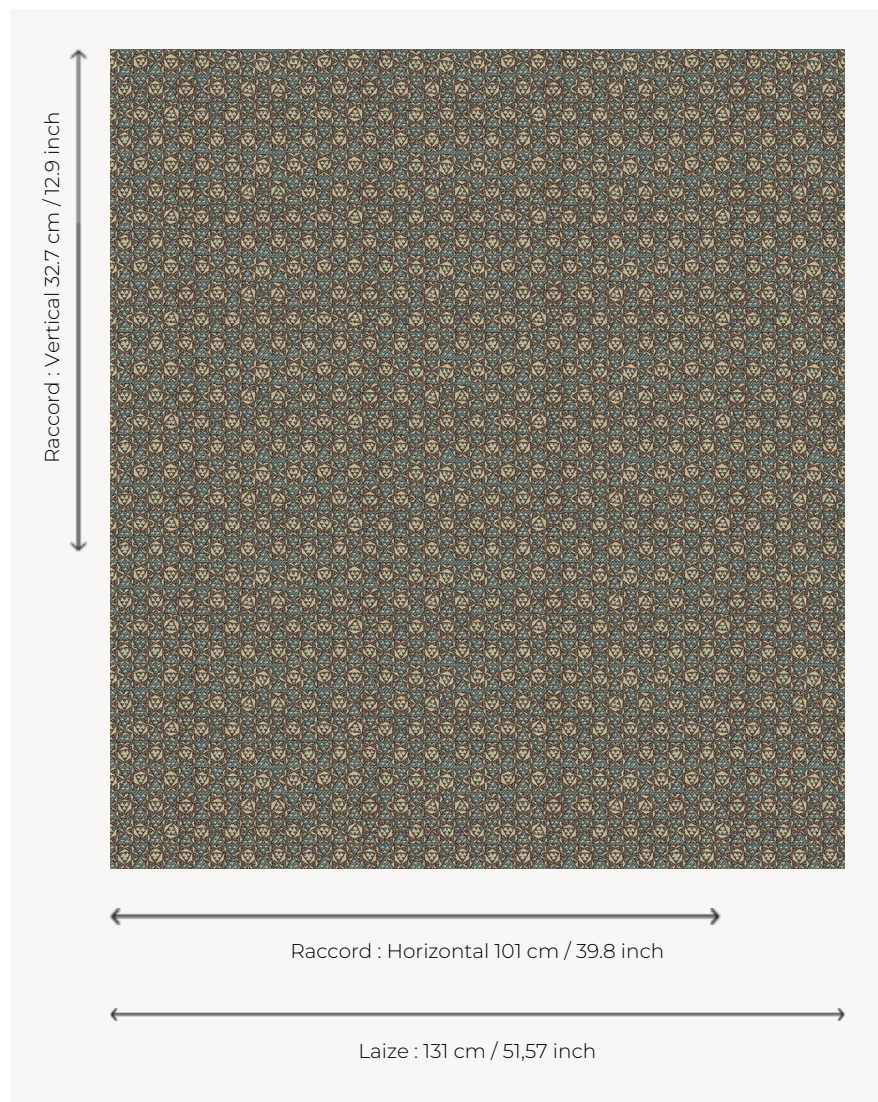


L5025_ISFAHAN_C535_N3158_FE ISFAHAN

Collaborating with the Apparatus studio, Le Manach creates a textile and modernist interpretation of the famous fine and ancestral Iranian marquetry, called Khatam, with a star motif and composed of thousands of inlaid pieces of wood, metal and camel bone.

L5025_ISFAHAN_C535_N3158_FE -



Le manach

TYPE	Toiles de Tours
DESIGN STRUCTURE	2 Colors, 1 Ground
RECOMMENDED YARNS	Nacré Chenille Bouclette
SPLIT YARNS	Yes
ARTIST	Apparatus
SALES UNIT	Available per meter
WIDTH	131 cm env. / approx 51,57 inch
REPEAT	H: 101 cm env. - approx 39,80 inch V: 32 cm env. - approx 12,90 inch Straight repeat
CARE	
NOTES	Woven in Pierre Frey's workshop in northern France. Living Heritage Mill.

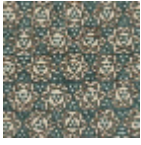
5 Colors



L5025_ISFAHA
N_B73_B91_B6
5_B54_FA



L5025_ISFAHA
N_C504_B71_F
G



L5025_ISFAHA
N_C535_N3158
_FE



L5025_ISFAHA
N_N3013_N302
1_FE



L5025_ISFAHA
N_N3137_N315
9_FG