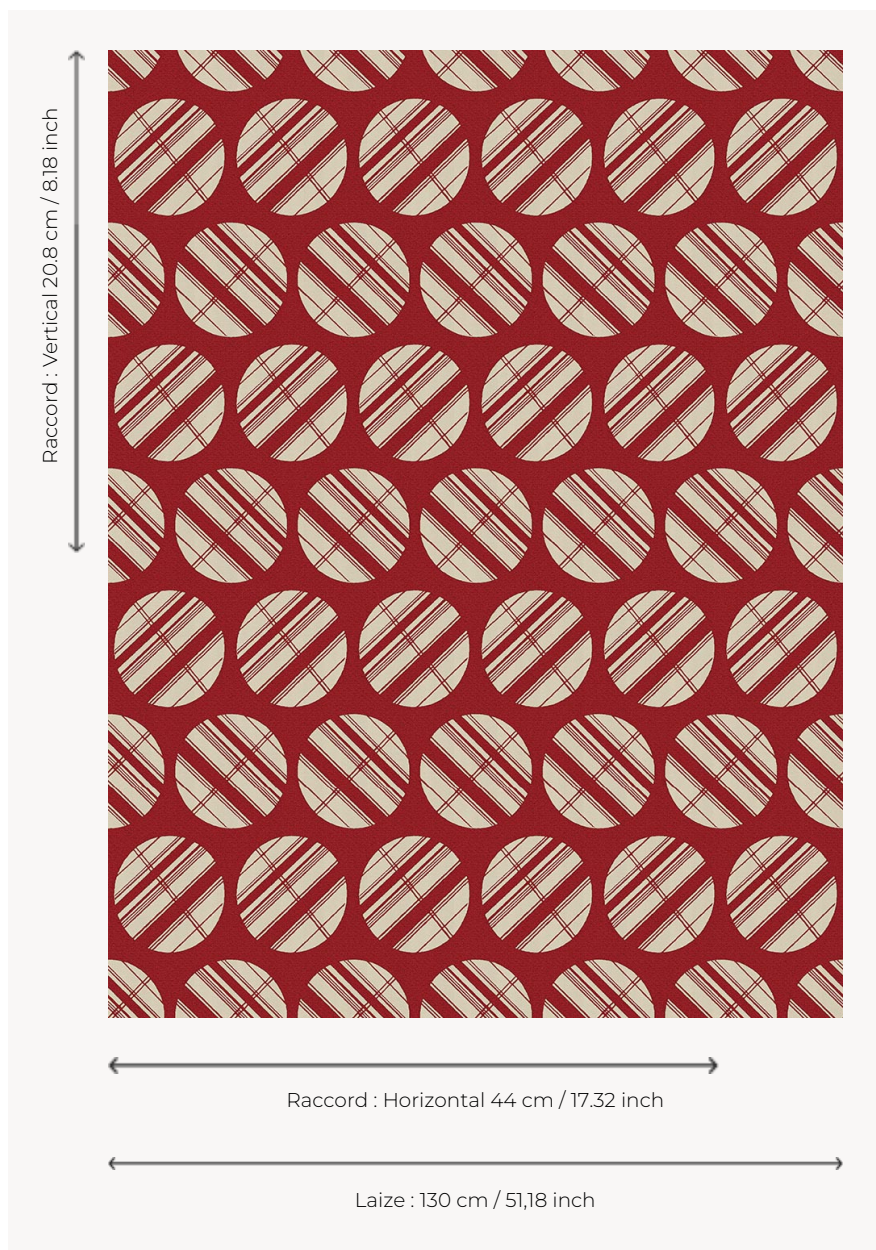


L5027_GRAND_TOKYO_NEGATIF_B58_FE GRAND TOKYO NEGATIF

Typical of the seventies spirit, this pattern consists of superimposed rows of circles crossed by stripes.

L5027_GRAND_TOKYO_NEGATIF_B58_FE -



Le manach

| | |
|--------------------------|--|
| TYPE | Toiles de Tours |
| DESIGN STRUCTURE | 1 Color, 1 Ground |
| RECOMMENDED YARNS | Nacré Chenille Bouclette |
| SPLIT YARNS | Yes |
| SALES UNIT | Available per meter |
| WIDTH | 130 cm env. / approx 51,18 inch |
| REPEAT | H: 44 cm env. - approx 17,32 inch V: 20 cm env. - approx 8,18 inch Straight repeat |
| CARE | |
| NOTES | Woven in Pierre Frey's workshop in northern France. Living Heritage Mill. |

3 Colors



L5027_GRAND
_TOKYO_NEGA
TIF_B58_FE



L5027_GRAND
_TOKYO_NEGA
TIF_C515_C516_
FE



L5027_GRAND
_TOKYO_NEGA
TIF_N3137_FE