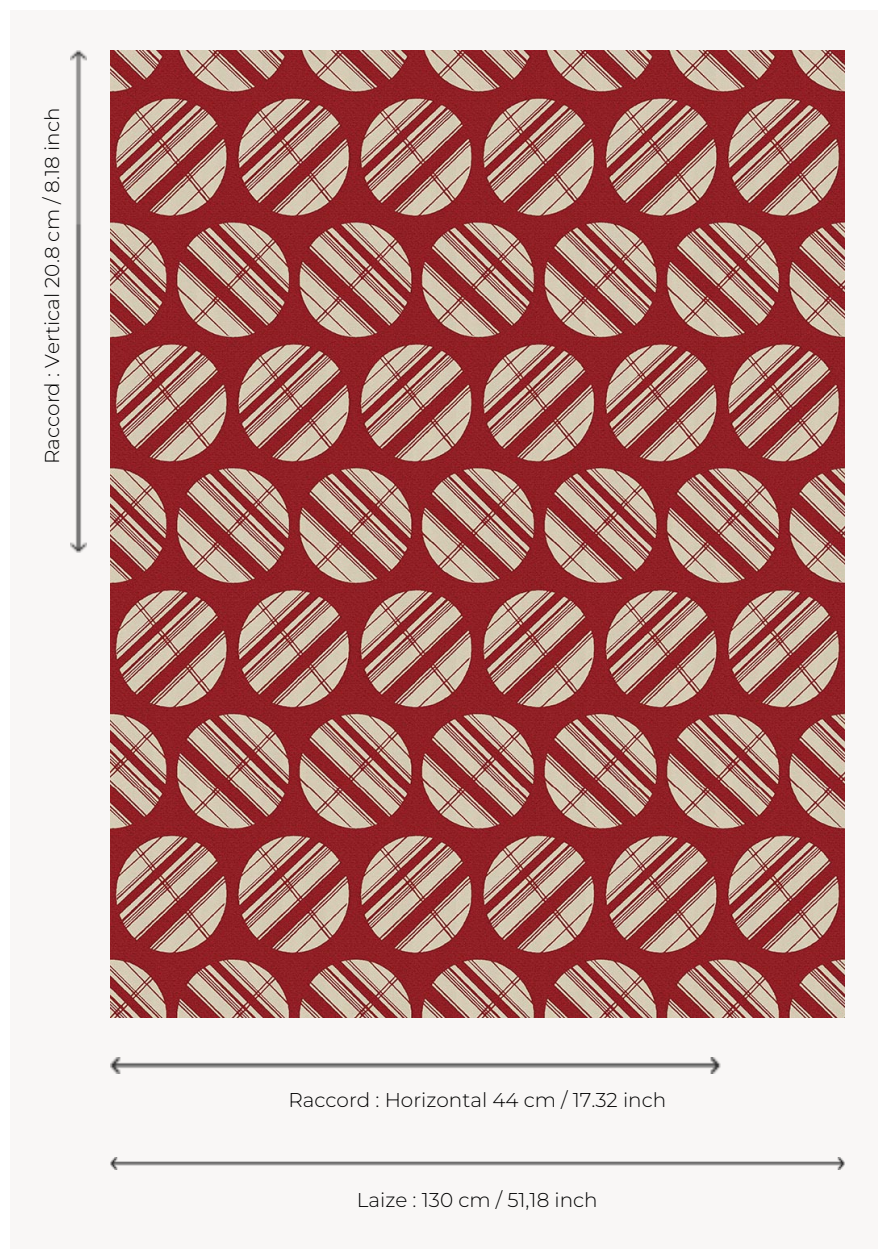



# L5027\_GRAND\_TOKYO\_NEGATIF\_C515\_C516\_FE GRAND TOKYO NEGATIF

Typical of the seventies spirit, this pattern consists of superimposed rows of circles crossed by stripes.

## L5027\_GRAND\_TOKYO\_NEGATIF\_C515\_C516\_FE -



## Le manach

<b>TYPE</b>	Toiles de Tours
<b>DESIGN STRUCTURE</b>	1 Color, 1 Ground
<b>RECOMMENDED YARNS</b>	Nacré Chenille Bouclette
<b>SPLIT YARNS</b>	Yes
<b>SALES UNIT</b>	Available per meter
<b>WIDTH</b>	130 cm env. / approx 51,18 inch
<b>REPEAT</b>	H: 44 cm env. - approx 17,32 inch V: 20 cm env. - approx 8,18 inch Straight repeat
<b>CARE</b>	
<b>NOTES</b>	Woven in Pierre Frey's workshop in northern France. Living Heritage Mill.

# 3 Colors



L5027\_GRAND  
\_TOKYO\_NEGA  
TIF\_B58\_FE



L5027\_GRAND  
\_TOKYO\_NEGA  
TIF\_C515\_C516\_  
FE



L5027\_GRAND  
\_TOKYO\_NEGA  
TIF\_N3137\_FE