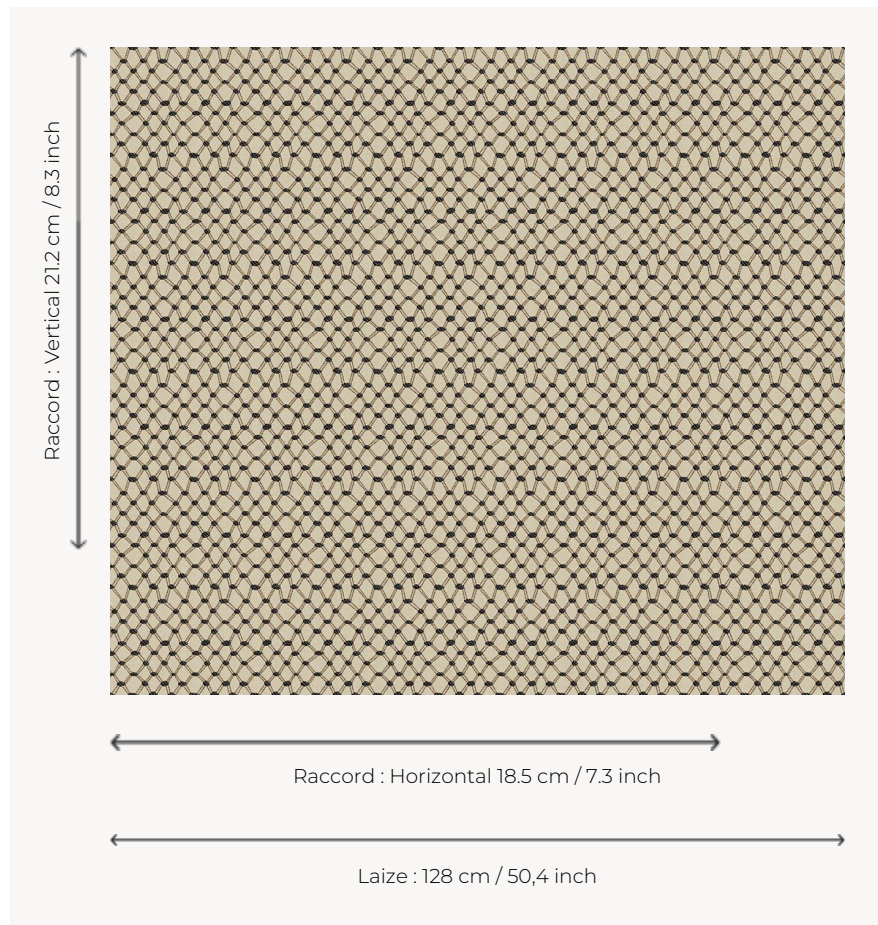


# L5040\_CANISSE\_B54\_B57\_FE CANISSE

Effect of chicken wire or trompe l'oeil reed for this Toile de Tours.

## L5040\_CANISSE\_B54\_B57\_FE -



## Le manach

<b>TYPE</b>	Toiles de Tours
<b>DESIGN STRUCTURE</b>	2 Colors, 1 Ground
<b>RECOMMENDED YARNS</b>	Nacré Chenille Bouclette
<b>SPLIT YARNS</b>	Yes
<b>SALES UNIT</b>	Available per meter
<b>WIDTH</b>	128 cm env. / approx 50,40 inch
<b>REPEAT</b>	H: 18 cm env. - approx 7,30 inch V: 21 cm env. - approx 8,30 inch Straight repeat
<b>CARE</b>	
<b>NOTES</b>	Woven in Pierre Frey's workshop in northern France. Living Heritage Mill.

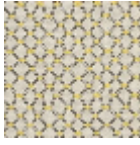
### 3 Colors



L5040\_CANISS  
E\_B54\_B57\_FE



L5040\_CANISS  
E\_C508\_C513\_  
FE



L5040\_CANISS  
E\_N3010\_N300  
2\_FE