

L5042_DJIBOUTI_C531_B58_B02_FE DJIBOUTI

Reproduction of a very beautiful Kuba velvet from Congo, so called because of the use of curly raffia yarns, a distant echo of European carved velvet. This design is part of the great tradition of African drawings that Le Manach published in 1928.

L5042_DJIBOUTI_C531_B58_B02_FE -



Raccord : Vertical 65 cm / 25.59 inch

Raccord : Horizontal 35.3 cm / 13.9 inch

Laize : 126 cm / 49,6 inch

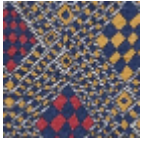
Le manach

TYPE	Toiles de Tours
DESIGN STRUCTURE	3 Colors, 1 Ground
RECOMMENDED YARNS	Nacré Chenille Bouclette
SALES UNIT	Available per meter
WIDTH	126 cm env. / approx 49,60 inch
REPEAT	H: 35 cm env. - approx 13,90 inch V: 65 cm env. - approx 25,59 inch Straight repeat
CARE	
NOTES	Woven in Pierre Frey's workshop in northern France. Living Heritage Mill.

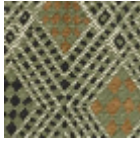
3 Colors



L5042_DJIBOU
TI_C508_B67_
C509_FI



L5042_DJIBOU
TI_C531_B58_B
02_FE



L5042_DJIBOU
TI_C541_C508_
C512_FE