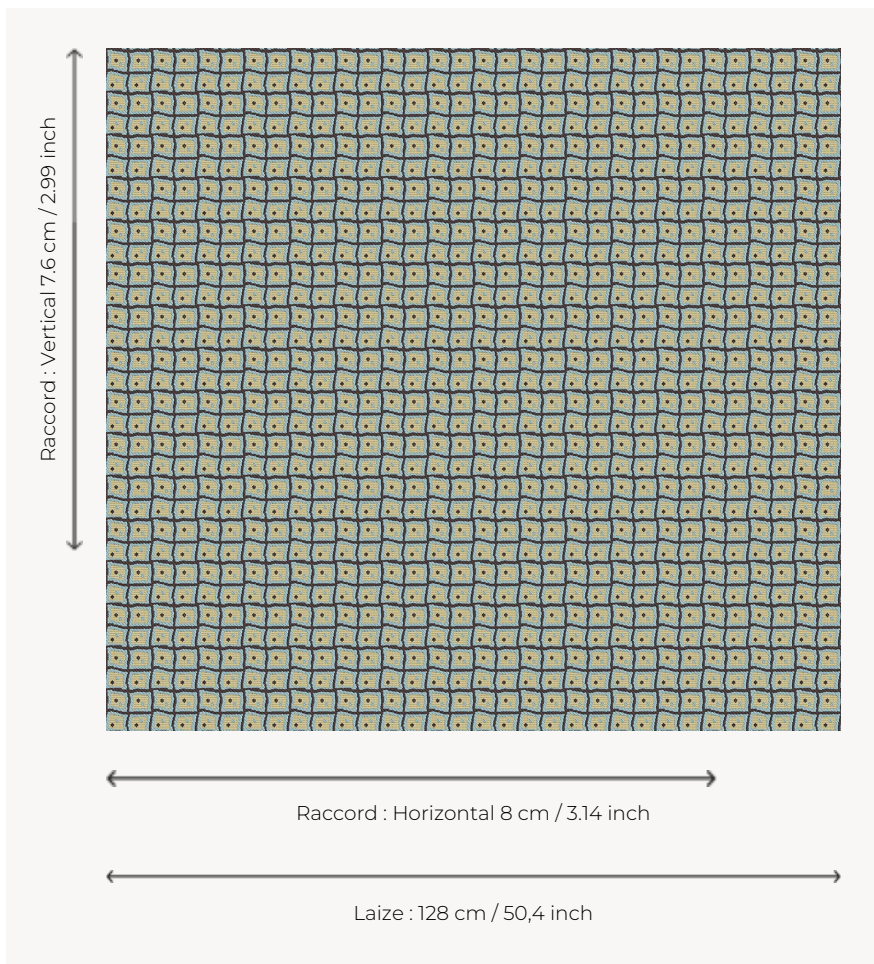


L5044_FLAG_N3137_N3135_FE FLAG

Based on a Maison Pierre Frey archive dating from the 1930s, this modernist graphic motif reinterprets tile using undulations.

L5044_FLAG_N3137_N3135_FE -



Le manach

TYPE	Toiles de Tours
DESIGN STRUCTURE	2 Colors, 1 Ground
RECOMMENDED YARNS	Nacré Chenille Bouclette
SPLIT YARNS	Yes
SALES UNIT	Available per meter
WIDTH	128 cm env. / approx 50,40 inch
REPEAT	H: 8 cm env. - approx 3,14 inch V: 7 cm env. - approx 2,99 inch Straight repeat
CARE	
NOTES	Woven in Pierre Frey's workshop in northern France. Living Heritage Mill.

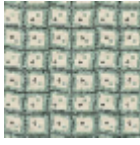
3 Colors



L5044_FLAG_
B73_B45_FE



L5044_FLAG_C
533_C538_FE



L5044_FLAG_
N3137_N3135_F
E