

# L5047\_SMOKE\_N3016\_FE SMOKE

This graphic and contemporary jacquard features vertical curls that look like they were drawn with a felt pen. The thick line gives it character and a nice balance.

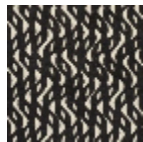
## L5047\_SMOKE\_N3016\_FE -



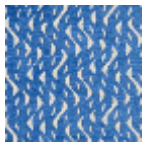
## Le manach

<b>TYPE</b>	Toiles de Tours
<b>DESIGN STRUCTURE</b>	1 Color, 1 Ground
<b>RECOMMENDED YARNS</b>	Nacré Chenille Bouclette
<b>SPLIT YARNS</b>	Yes
<b>SALES UNIT</b>	Available per meter
<b>WIDTH</b>	127 cm env. / approx 50,00 inch
<b>REPEAT</b>	H: 20 cm env. - approx 8,11 inch V: 16 cm env. - approx 6,45 inch Straight repeat
<b>CARE</b>	
<b>NOTES</b>	Woven in Pierre Frey's workshop in northern France. Living Heritage Mill.

3 Colors



L5047\_SMOKE  
\_B54\_FE



L5047\_SMOKE  
\_C532\_FE



L5047\_SMOKE  
\_N3016\_FE