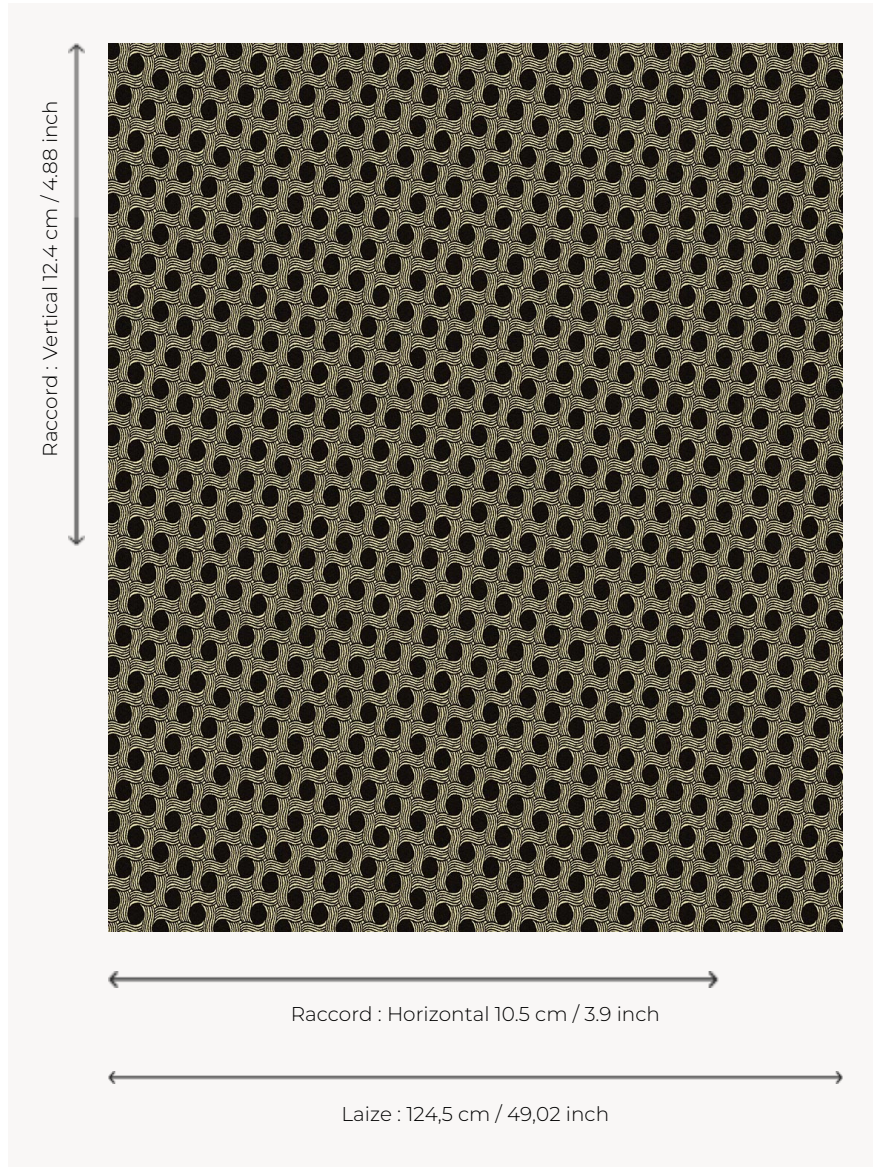


L5048_TOURBILLONS_C532_FE TOURBILLONS

Jacquard whose pattern evokes a large canework full of charm and subtlety.

L5048_TOURBILLONS_C532_FE -



Le manach

TYPE	Toiles de Tours
DESIGN STRUCTURE	1 Color, 1 Ground
RECOMMENDED YARNS	Nacré Chenille Bouclette
SPLIT YARNS	Yes
REVERSIBLE	Yes
SALES UNIT	Available per meter
WIDTH	124 cm env. / approx 49,02 inch
REPEAT	H: 10 cm env. - approx 3,90 inch V: 12 cm env. - approx 4,88 inch Straight repeat
CARE	

NOTES Woven in Pierre Frey's workshop in northern France. Living Heritage Mill.

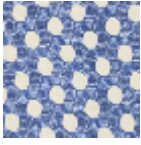
3 Colors



L5048_TOURB
ILLONS_B54_F
E



L5048_TOURB
ILLONS_C532_
FE



L5048_TOURB
ILLONS_C532_
FE_Verso