

# L5053\_COCHINE\_N3010\_B84\_FE COCHINE

Graphic and naive, this pattern composed of simple geometric shapes draws a large stripe full of character and authenticity.

## L5053\_COCHINE\_N3010\_B84\_FE -



## Le manach

<b>TYPE</b>	Toiles de Tours
<b>DESIGN STRUCTURE</b>	2 Colors, 1 Ground
<b>RECOMMENDED YARNS</b>	Nacré Chenille Bouclette
<b>SPLIT YARNS</b>	Yes
<b>SALES UNIT</b>	Available per meter
<b>WIDTH</b>	126 cm env. / approx 49,88 inch
<b>REPEAT</b>	H: 63 cm env. - approx 25,00 inch V: 37 cm env. - approx 14,88 inch Straight repeat
<b>CARE</b>	
<b>NOTES</b>	Woven in Pierre Frey's workshop in northern France. Living Heritage Mill.

# 5 Colors



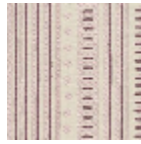
L5053\_COCHI  
NE\_B28\_B38\_F  
M



L5053\_COCHI  
NE\_C508\_C533  
\_FE



L5053\_COCHI  
NE\_N3010\_B8  
4\_FE



L5053\_COCHI  
NE\_N3012\_N30  
08\_FE



L5053\_COCHI  
NE\_N3012\_N30  
15\_FE