

L5053_COCHINE_N3012_N3008_FE COCHINE

Graphic and naive, this pattern composed of simple geometric shapes draws a large stripe full of character and authenticity.

L5053_COCHINE_N3012_N3008_FE -



Le manach

TYPE	Toiles de Tours
DESIGN STRUCTURE	2 Colors, 1 Ground
RECOMMENDED YARNS	Nacré Chenille Bouclette
SPLIT YARNS	Yes
SALES UNIT	Available per meter
WIDTH	126 cm env. / approx 49,88 inch
REPEAT	H: 63 cm env. - approx 25,00 inch V: 37 cm env. - approx 14,88 inch Straight repeat
CARE	
NOTES	Woven in Pierre Frey's workshop in northern France. Living Heritage Mill.

5 Colors



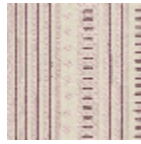
L5053_COCHI
NE_B28_B38_F
M



L5053_COCHI
NE_C508_C533
_FE



L5053_COCHI
NE_N3010_B8
4_FE



L5053_COCHI
NE_N3012_N30
08_FE



L5053_COCHI
NE_N3012_N30
15_FE