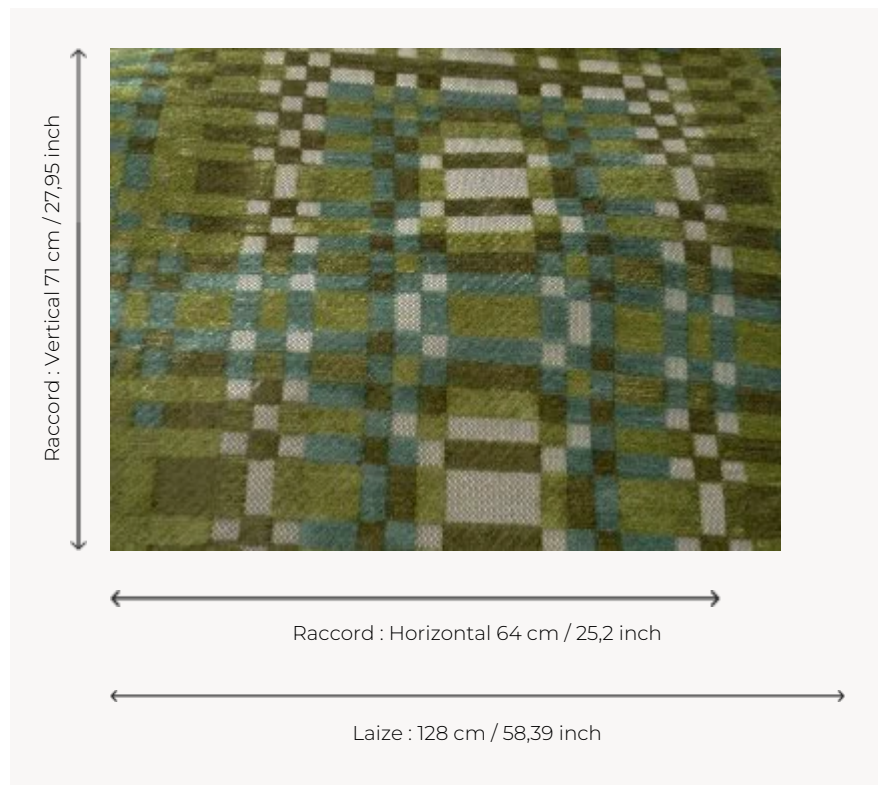


# L5064\_RADIOSTAR\_C542\_C539\_C538\_FM RADIOSTAR

For this geometric composition, modernist inspiration creates a graphic and colorful maze of the checkerboards.

## L5064\_RADIOSTAR\_C542\_C539\_C538\_FM -



## Le manach

<b>TYPE</b>	Toiles de Tours
<b>DESIGN STRUCTURE</b>	3 Colors, 1 Ground
<b>RECOMMENDED YARNS</b>	Nacré Chenille Bouclette
<b>SALES UNIT</b>	Available per meter
<b>WIDTH</b>	128 cm env. / approx 58,39 inch
<b>REPEAT</b>	H: 64 cm env. - approx 25,20 inch V: 71 cm env. - approx 27,95 inch Straight repeat
<b>CARE</b>	
<b>NOTES</b>	Woven in Pierre Frey's workshop in northern France. Living Heritage Mill.

# 5 Colors



L5064\_RADIO  
STAR\_B38\_B14  
\_B42\_FE



L5064\_RADIO  
STAR\_C542\_C5  
39\_C538\_FM



L5064\_RADIO  
STAR\_N3003\_  
N3022\_N3008\_  
FE



L5064\_RADIO  
STAR\_N3011\_N  
3018\_N3016\_FE



L5064\_RADIO  
STAR\_N3011\_N  
3019\_N3009\_F  
E