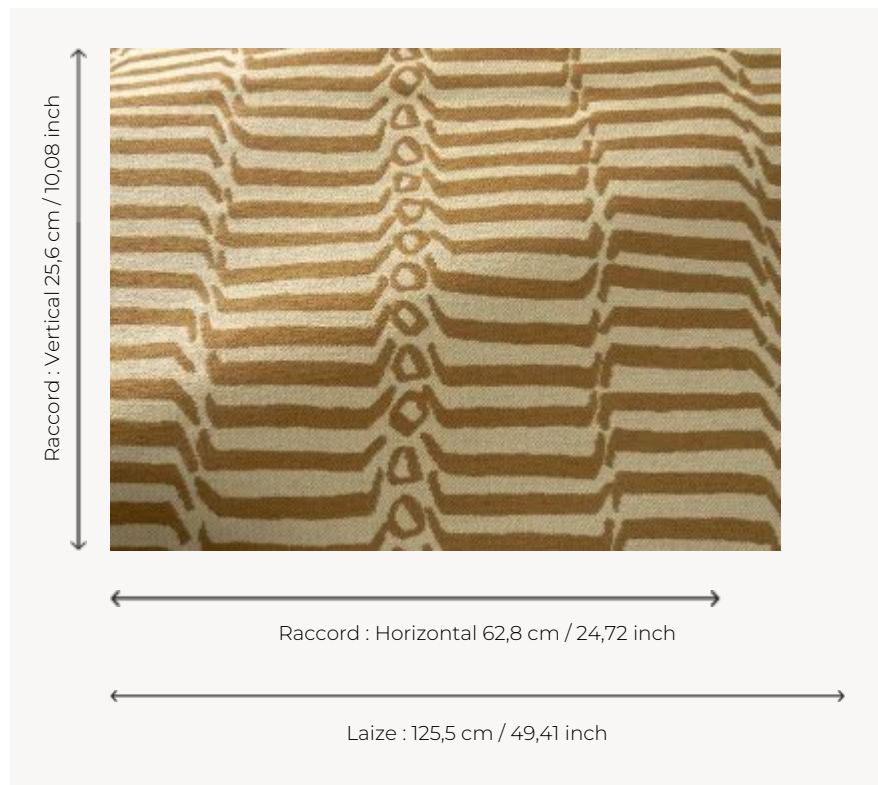


## L5067\_KATHMANDU\_B87\_B57 KATHMANDU

Between animal skin and ripples, KATHMANDU is a warm and comforting two-tone jacquard that takes us on a journey through the bark of Nepal.

### L5067\_KATHMANDU\_B87\_B57 -



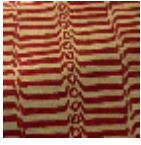
### Le manach

<b>TYPE</b>	Toiles de Tours
<b>DESIGN STRUCTURE</b>	2 Colors
<b>RECOMMENDED YARNS</b>	Nacré Chenille Bouclette
<b>SPLIT YARNS</b>	Yes
<b>SALES UNIT</b>	Available per meter
<b>WIDTH</b>	125 cm env. / approx 49,41 inch
<b>REPEAT</b>	H: 62 cm env. - approx 24,72 inch V: 25 cm env. - approx 10,08 inch Straight repeat
<b>CARE</b>	
<b>NOTES</b>	Woven in Pierre Frey's workshop in northern France. Living Heritage Mill.

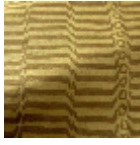
## 4 Colors



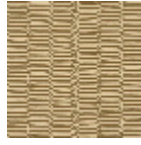
L5067\_KATHM  
ANDU\_B87\_B5  
7



L5067\_KATHM  
ANDU\_C514\_C  
520



L5067\_KATHM  
ANDU\_C515\_C  
512



L5067\_KATHM  
ANDU\_N3021\_  
N3006