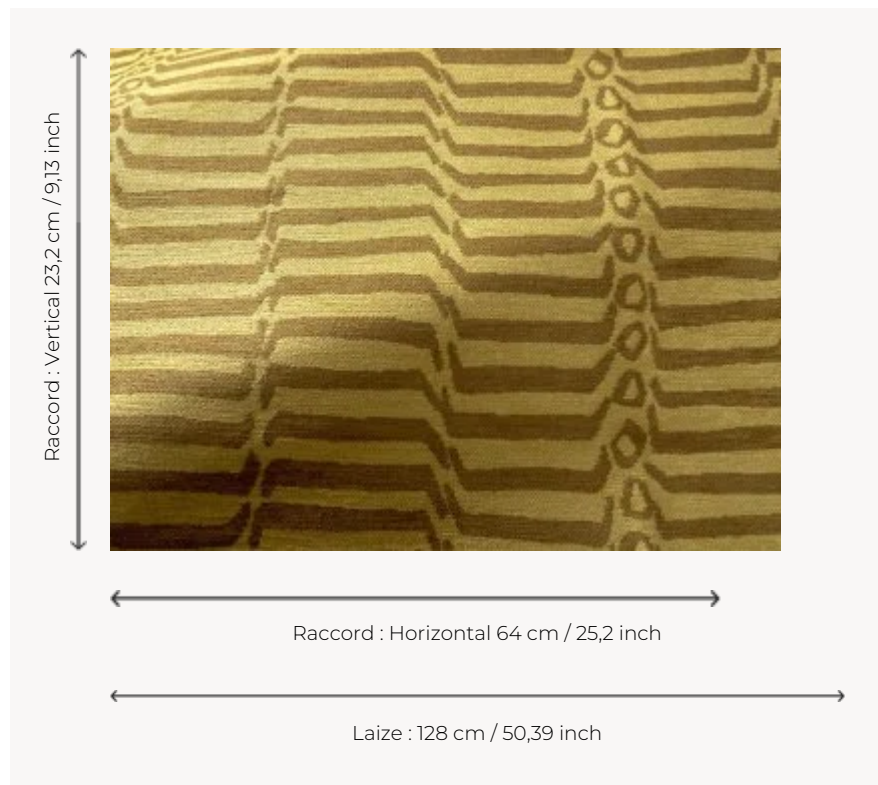


L5067_KATHMANDU_C515_C512 KATHMANDU

Between animal skin and ripples, KATHMANDU is a warm and comforting two-tone jacquard that takes us on a journey through the bark of Nepal.

L5067_KATHMANDU_C515_C512 -



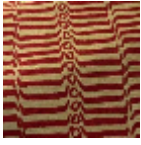
Le manach

| | |
|--------------------------|--|
| TYPE | Toiles de Tours |
| DESIGN STRUCTURE | 2 Colors |
| RECOMMENDED YARNS | Nacré Chenille Bouclette |
| SPLIT YARNS | Yes |
| SALES UNIT | Available per meter |
| WIDTH | 128 cm env. / approx 50,39 inch |
| REPEAT | H: 64 cm env. - approx 25,20 inch V: 23 cm env. - approx 9,13 inch Straight repeat |
| CARE | |
| NOTES | Woven in Pierre Frey's workshop in northern France. Living Heritage Mill. |

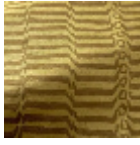
4 Colors



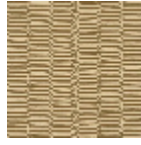
L5067_KATHM
ANDU_B87_B5
7



L5067_KATHM
ANDU_C514_C
520



L5067_KATHM
ANDU_C515_C
512



L5067_KATHM
ANDU_N3021_
N3006