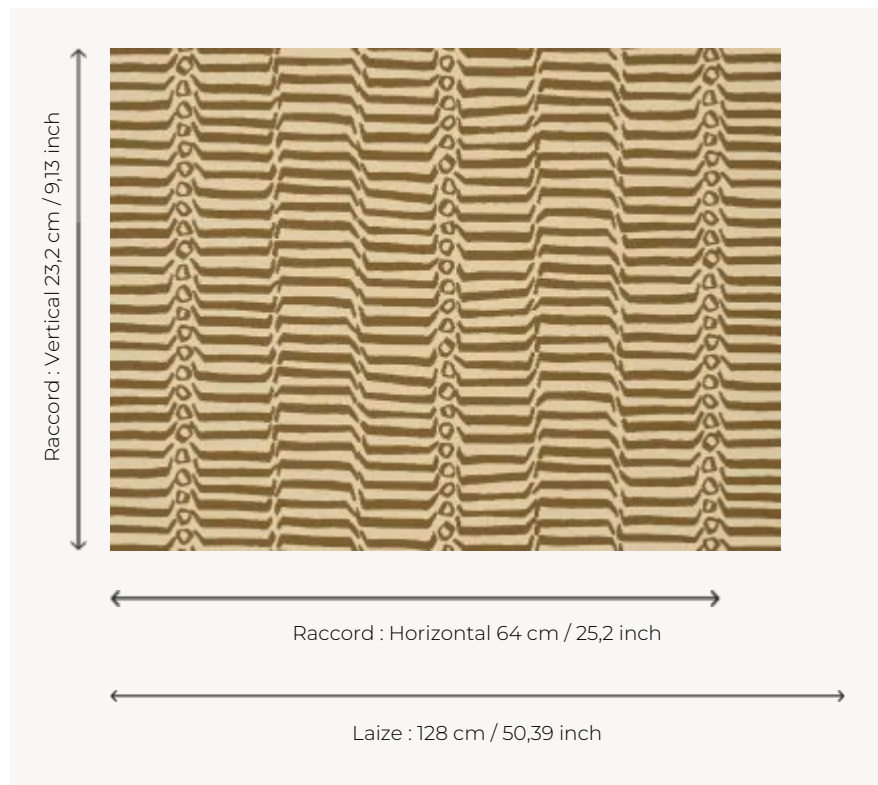


L5067_KATHMANDU_N3021_N3006 KATHMANDU

Between animal skin and ripples, KATHMANDU is a warm and comforting two-tone jacquard that takes us on a journey through the bark of Nepal.

L5067_KATHMANDU_N3021_N3006 -



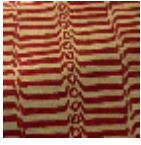
Le manach

TYPE	Toiles de Tours
DESIGN STRUCTURE	2 Colors
RECOMMENDED YARNS	Nacré Chenille Bouclette
SPLIT YARNS	Yes
SALES UNIT	Available per meter
WIDTH	128 cm env. / approx 50,39 inch
REPEAT	H: 64 cm env. - approx 25,20 inch V: 23 cm env. - approx 9,13 inch Straight repeat
CARE	
NOTES	Woven in Pierre Frey's workshop in northern France. Living Heritage Mill.

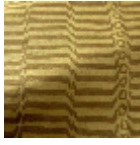
4 Colors



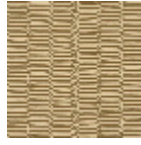
L5067_KATHM
ANDU_B87_B5
7



L5067_KATHM
ANDU_C514_C
520



L5067_KATHM
ANDU_C515_C
512



L5067_KATHM
ANDU_N3021_
N3006