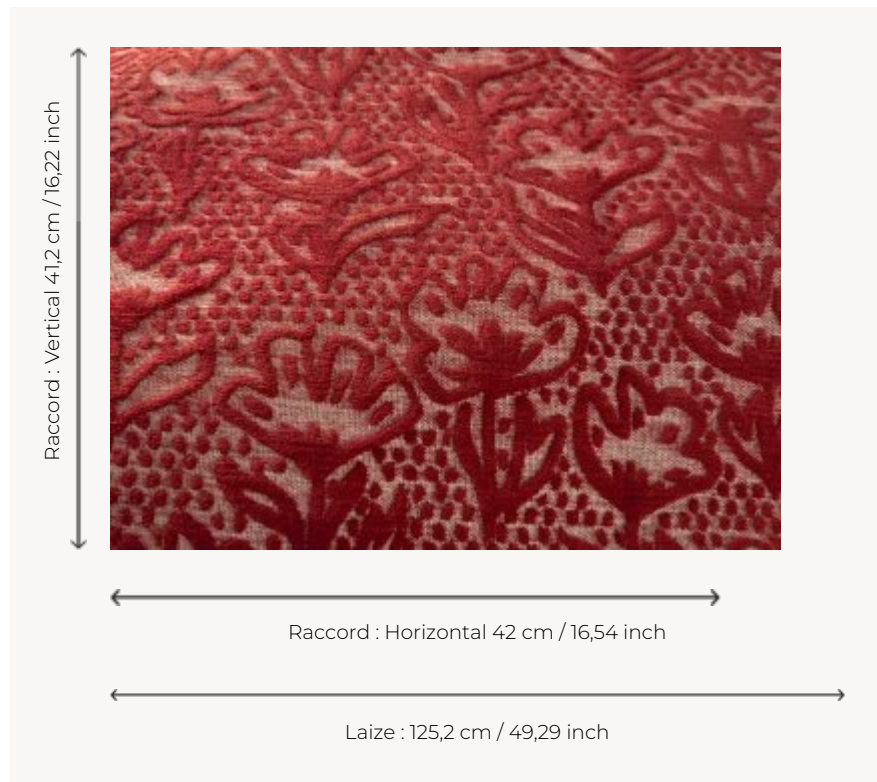


# L5071\_FLEUR\_DE\_COTON\_C520\_FE FLEUR DE COTON

Reinterpreted in a cheerful and graphic style, this lush design depicts a field of cotton flowers.

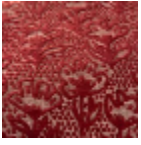
## L5071\_FLEUR\_DE\_COTON\_C520\_FE -



## Le manach

<b>TYPE</b>	Toiles de Tours
<b>DESIGN STRUCTURE</b>	1 Color, 1 Ground
<b>RECOMMENDED YARNS</b>	Nacré Chenille Bouclette
<b>SPLIT YARNS</b>	Yes
<b>REVERSIBLE</b>	Yes
<b>SALES UNIT</b>	Available per meter
<b>WIDTH</b>	125 cm env. / approx 49,29 inch
<b>REPEAT</b>	H: 42 cm env. - approx 16,54 inch V: 41 cm env. - approx 16,22 inch Straight repeat
<b>CARE</b>	
<b>NOTES</b>	Woven in Pierre Frey's workshop in northern France. Living Heritage Mill.

## 4 Colors



L5071\_FLEUR\_  
DE\_COTON\_C5  
20\_FE



L5071\_FLEUR\_  
DE\_COTON\_N  
3010\_N3004\_F  
E



L5071\_FLEUR\_  
DE\_COTON\_N  
3019\_FE



L5071\_FLEUR\_  
DE\_COTON\_N  
3179\_FE