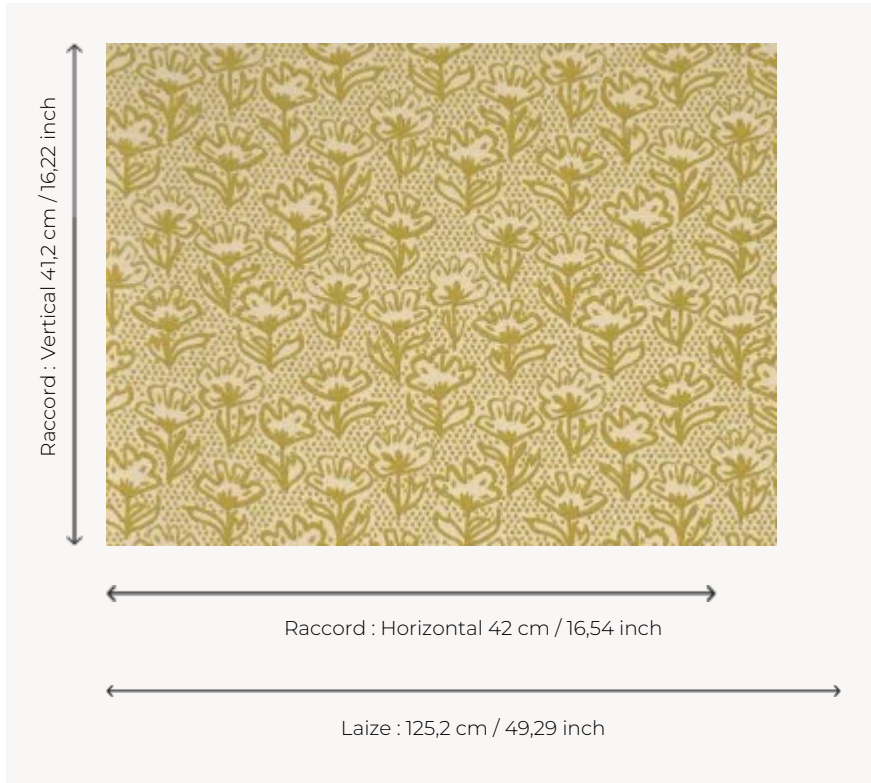


L5071_FLEUR_DE_COTON_N3010_N3004_FE FLEUR DE COTON

Reinterpreted in a cheerful and graphic style, this lush design depicts a field of cotton flowers.

L5071_FLEUR_DE_COTON_N3010_N3004_FE -



Le manach

TYPE	Toiles de Tours
DESIGN STRUCTURE	1 Color, 1 Ground
RECOMMENDED YARNS	Nacré Chenille Bouclette
SPLIT YARNS	Yes
REVERSIBLE	Yes
SALES UNIT	Available per meter
WIDTH	125 cm env. / approx 49,29 inch
REPEAT	H: 42 cm env. - approx 16,54 inch V: 41 cm env. - approx 16,22 inch Straight repeat

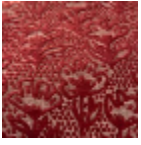
CARE



NOTES

Woven in Pierre Frey's workshop in northern France. Living Heritage Mill.

4 Colors



L5071_FLEUR_
DE_COTON_C5
20_FE



L5071_FLEUR_
DE_COTON_N
3010_N3004_F
E



L5071_FLEUR_
DE_COTON_N
3019_FE



L5071_FLEUR_
DE_COTON_N
3179_FE