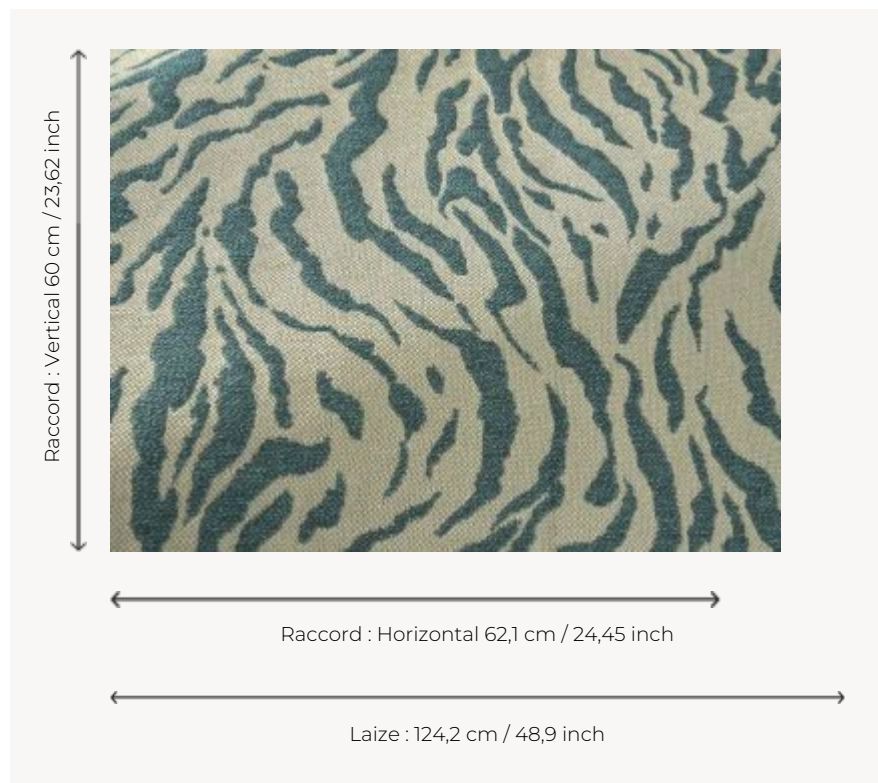


L5075_JAISALMER_B65_B73_FA JAISALMER

In 1928, Georges Le Manach launched Toiles de Tours with this type of design, which was very fashionable at the time. The rawness of the weaving technique is particularly suited to this animal theme.

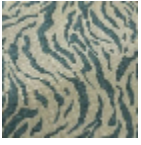
L5075_JAISALMER_B65_B73_FA -



Le manach

TYPE	Toiles de Tours
DESIGN STRUCTURE	1 Color, 1 Ground
RECOMMENDED YARNS	Nacré Chenille Bouclette
SPLIT YARNS	Yes
REVERSIBLE	Yes
SALES UNIT	Available per meter
WIDTH	124 cm env. / approx 48,90 inch
REPEAT	H: 62 cm env. - approx 24,45 inch V: 60 cm env. - approx 23,62 inch Straight repeat
CARE	
NOTES	Woven in Pierre Frey's workshop in northern France. Living Heritage Mill.

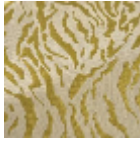
3 Colors



L5075_JAISAL
MER_B65_B73
_FA



L5075_JAISAL
MER_C517_FM



L5075_JAISAL
MER_N3139_FE