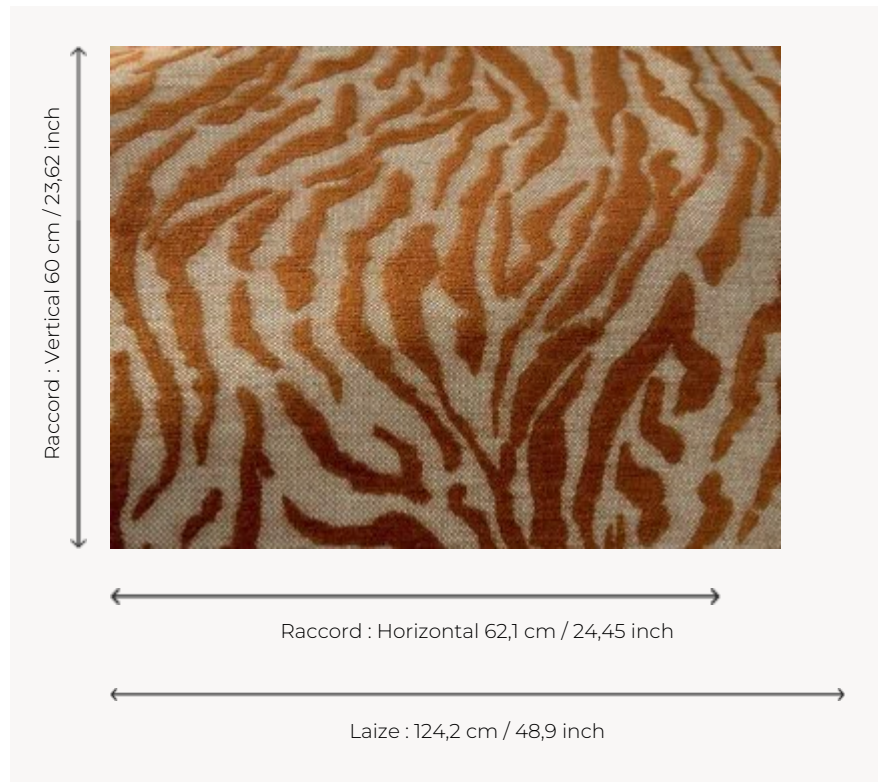


## L5075\_JAISALMER\_C517\_FM JAISALMER

In 1928, Georges Le Manach launched Toiles de Tours with this type of design, which was very fashionable at the time. The rawness of the weaving technique is particularly suited to this animal theme.

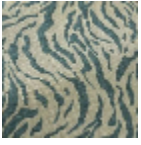
### L5075\_JAISALMER\_C517\_FM -



### Le manach

<b>TYPE</b>	Toiles de Tours
<b>DESIGN STRUCTURE</b>	1 Color, 1 Ground
<b>RECOMMENDED YARNS</b>	Nacré Chenille Bouclette
<b>SPLIT YARNS</b>	Yes
<b>REVERSIBLE</b>	Yes
<b>SALES UNIT</b>	Available per meter
<b>WIDTH</b>	124 cm env. / approx 48,90 inch
<b>REPEAT</b>	H: 62 cm env. - approx 24,45 inch V: 60 cm env. - approx 23,62 inch Straight repeat
<b>CARE</b>	
<b>NOTES</b>	Woven in Pierre Frey's workshop in northern France. Living Heritage Mill.

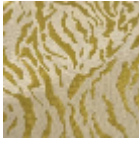
## 3 Colors



L5075\_JAISAL  
MER\_B65\_B73  
\_FA



L5075\_JAISAL  
MER\_C517\_FM



L5075\_JAISAL  
MER\_N3139\_FE