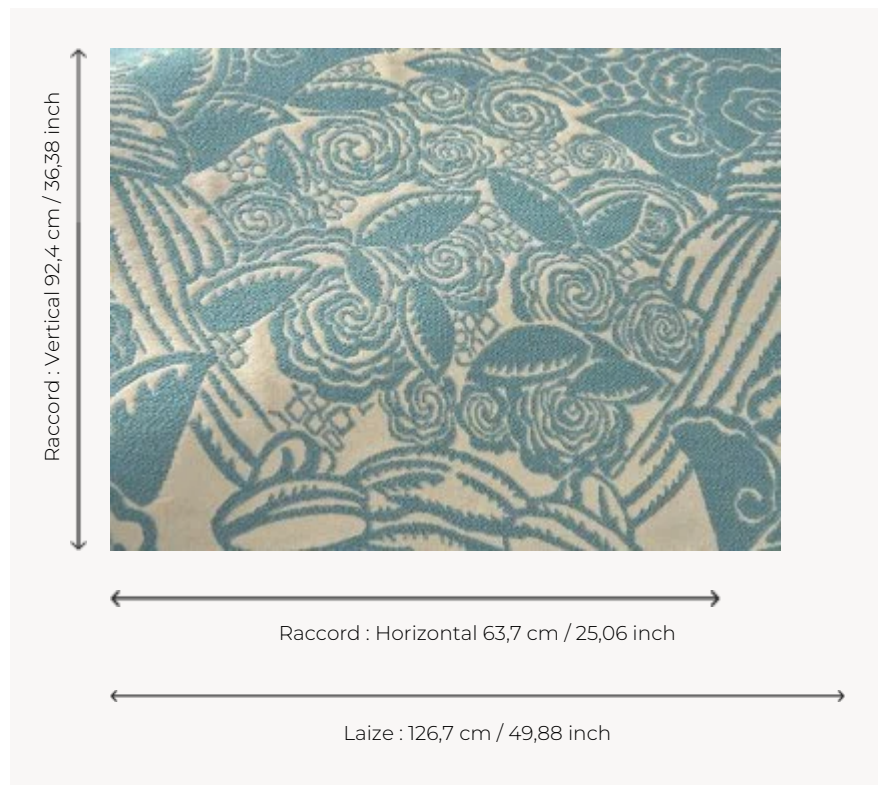


## L5076\_DRAPERIES\_B73\_B37\_FE DRAPERIES

Inspired by a Toile de Tours created in 1930 by Georges Le Manach, this reinterpretation of a brocatelle evokes an Art Deco pattern in the spirit of Ruhlmann's designs.

### L5076\_DRAPERIES\_B73\_B37\_FE -



### Le manach

<b>TYPE</b>	Toiles de Tours
<b>DESIGN STRUCTURE</b>	1 Color, 1 Ground
<b>RECOMMENDED YARNS</b>	Nacré Chenille Bouclette
<b>SPLIT YARNS</b>	Yes
<b>SALES UNIT</b>	Available per meter
<b>WIDTH</b>	126 cm env. / approx 49,88 inch
<b>REPEAT</b>	H: 63 cm env. - approx 25,06 inch V: 92 cm env. - approx 36,38 inch Straight repeat
<b>CARE</b>	
<b>NOTES</b>	Woven in Pierre Frey's workshop in northern France. Living Heritage Mill.

## 4 Colors



L5076\_DRAPE  
RIES\_B73\_B37  
\_FE



L5076\_DRAPE  
RIES\_C544\_C5  
08\_FM



L5076\_DRAPE  
RIES\_N3023\_N  
3002\_FE



L5076\_DRAPE  
RIES\_N3156\_FE