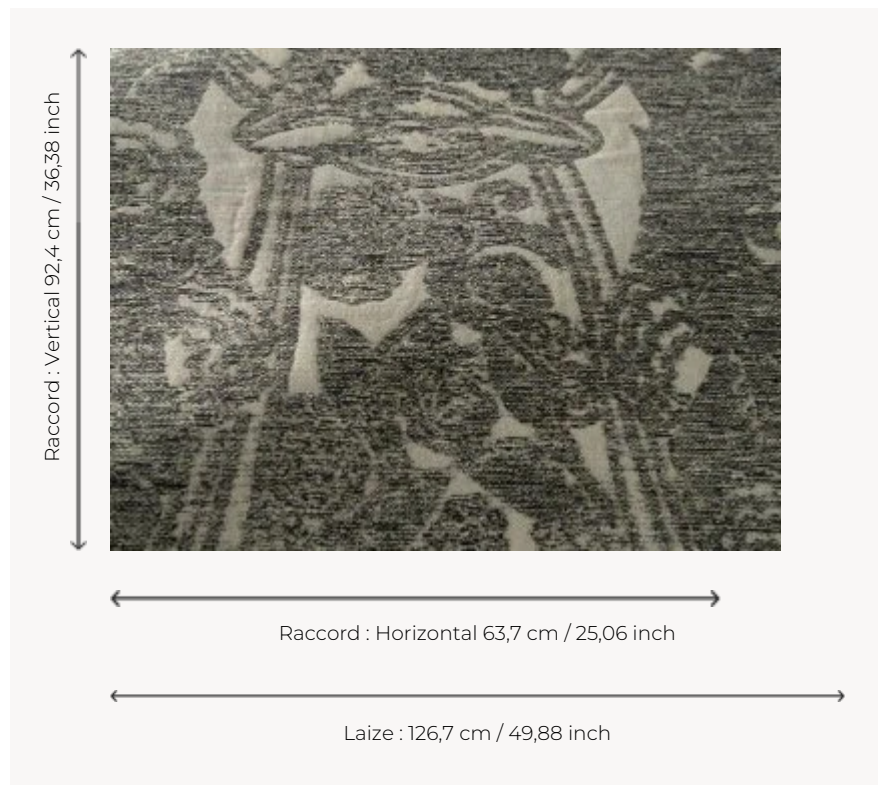


L5076_DRAPERIES_C544_C508_FM DRAPERIES

Inspired by a Toile de Tours created in 1930 by Georges Le Manach, this reinterpretation of a brocatelle evokes an Art Deco pattern in the spirit of Ruhlmann's designs.

L5076_DRAPERIES_C544_C508_FM -



Le manach

| | |
|--------------------------|---|
| TYPE | Toiles de Tours |
| DESIGN STRUCTURE | 1 Color, 1 Ground |
| RECOMMENDED YARNS | Nacré Chenille Bouclette |
| SPLIT YARNS | Yes |
| SALES UNIT | Available per meter |
| WIDTH | 126 cm env. / approx 49,88 inch |
| REPEAT | H: 63 cm env. - approx 25,06 inch V: 92 cm env. - approx 36,38 inch Straight repeat |
| CARE | |
| NOTES | Woven in Pierre Frey's workshop in northern France. Living Heritage Mill. |

4 Colors



L5076_DRAPE
RIES_B73_B37
_FE



L5076_DRAPE
RIES_C544_C5
08_FM



L5076_DRAPE
RIES_N3023_N
3002_FE



L5076_DRAPE
RIES_N3156_FE