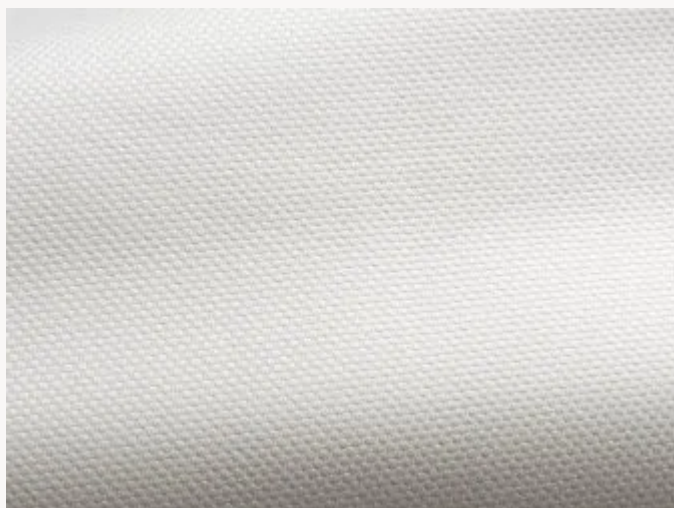


## O7792010 SUNSET

A semi-plain with a checkerboard weave highlighting the tone-on-tone or contrasting colour combinations. One shiny and one matt side varies the hand and texture of this fabric.

### O7792010 - Blanc



Laize : 140,00 cm / 55,11 inch

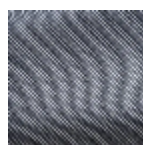
### Boussac

<b>TYPE</b>	Semi plains
<b>USE</b>	Intensive use
<b>MARTINDALE</b>	40.000 T
<b>COMPOSITION</b>	100 % Acrylic Dralon
<b>SALES UNIT</b>	Available per meter/yard
<b>WIDTH</b>	140 cm / 55,11 inch
<b>WEIGHT</b>	848 gr / ml
<b>CARE</b>	

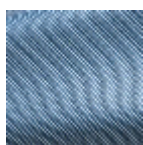
**NOTES** High lightfastness, mold-resistant, stain & water repellent  
Woven in Pierre Frey's workshop in northern France. Living Heritage Mill.  
Stain & water repellent

**INFORMATION** For outdoor use, make sure to use appropriate lining materials.  
Remember to store pads and cushions in a clean, dry place when not in use.

## 7 Colors



O7792001  
Jean



O7792002  
Gitane



O7792005  
Citron



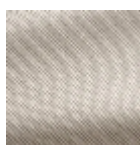
O7792007  
Cerise



O7792010  
Blanc



O7792012  
Calisson



O7792013  
Marbre