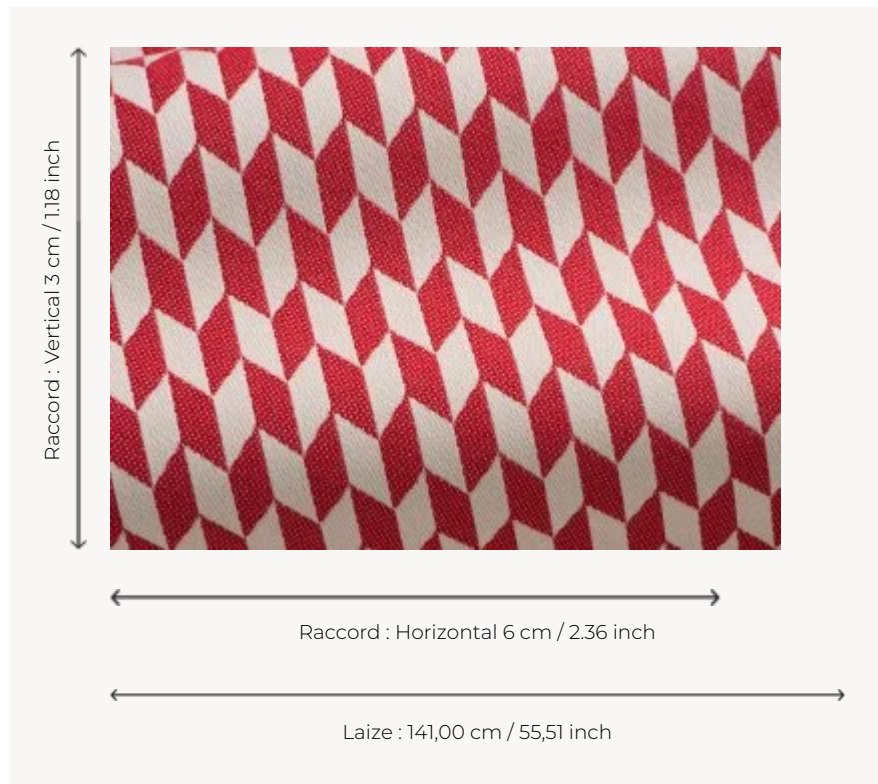


O7799006 SWING

A bold design that creates the illusion of 3D which goes perfectly with large geometric patterns.

O7799006 - Cerise



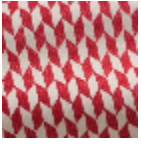
Boussac

| | |
|--------------------|--|
| TYPE | Jacquards |
| USE | Intensive use |
| MARTINDALE | 20.000 T |
| COMPOSITION | 100 % Acrylic Dralon |
| SALES UNIT | Available per meter/yard |
| WIDTH | 141 cm / 55,51 inch |
| REPEAT | H: 6 cm - 2,36 inch V: 3 cm - 1,18 inch |
| WEIGHT | 602 gr / ml |
| CARE | |

| | |
|--------------|---|
| NOTES | <p>Reversible</p> <p>High lightfastness, mold-resistant, stain & water repellent</p> <p>Can be embossed</p> <p>Woven in Pierre Frey's workshop in northern France. Living Heritage Mill.</p> <p>Stain & water repellent</p> |
|--------------|---|

| | |
|--------------------|--|
| INFORMATION | <p>For outdoor use, make sure to use appropriate lining materials.</p> <p>Remember to store pads and cushions in a clean, dry place when not in use.</p> |
|--------------------|--|

1 Colors



O7799006
Cerise