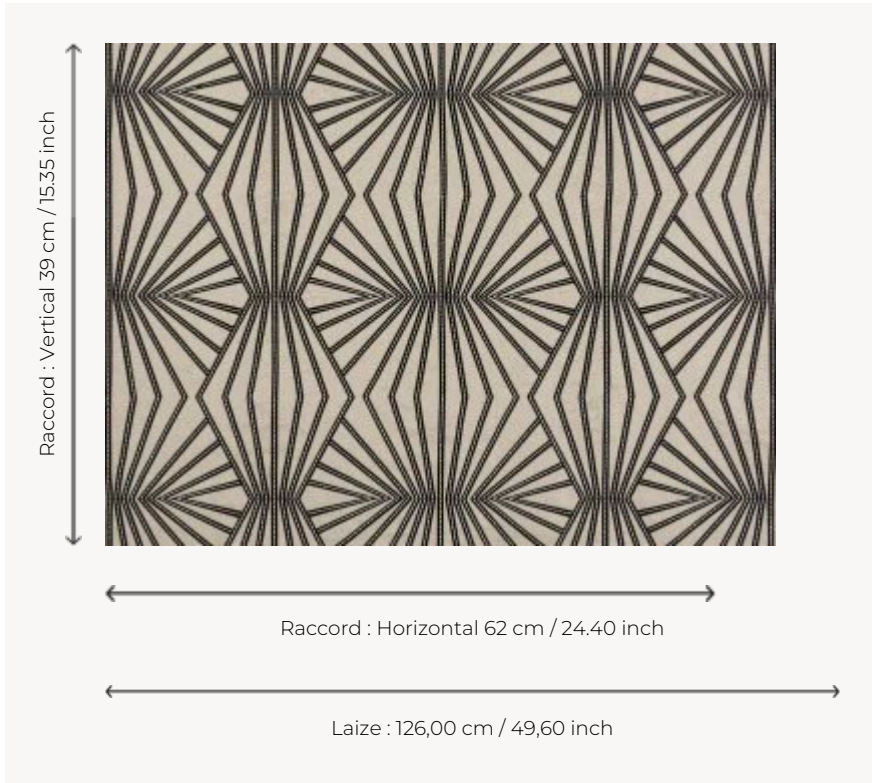


O7912001 PRISM

The mineral-aspect geometry of radiant black embroidery highlighted with white saddle stitching on natural linen canvas. The perfect match of the linen tone cannot be guaranteed from one batch to another. Therefore, a cutting for approval is recommended in the event of restocking or to match an existing tone.

O7912001 - Dune



Boussac

TYPE	Embroideries
COMPOSITION	65 % Linen - 35 % Viscose
SALES UNIT	Available per meter/yard
WIDTH	126 cm / 49,60 inch
REPEAT	H: 62 cm - 24,40 inch V: 39 cm - 15,35 inch
WEIGHT	454 gr / ml
CARE	
INFORMATION	Cutting for approval recommended

1 Colors



O7912001

Dune