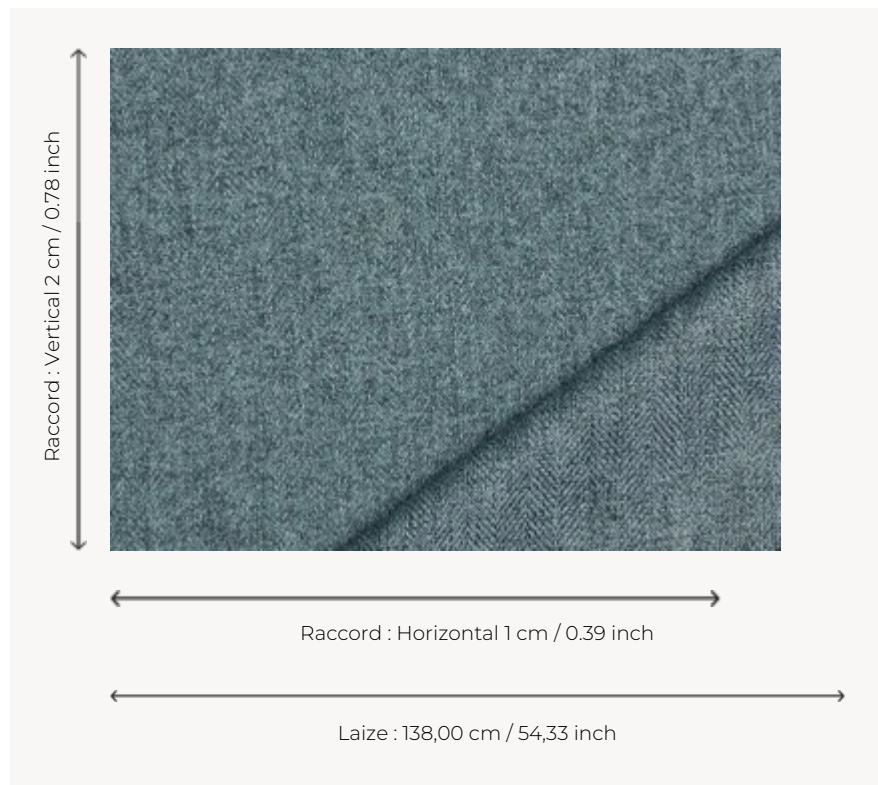


# 07939002 SHERLOCK

A captivating reversible cloth influenced by men's suiting, this plain fabric is available in a variety of colors that range from classic to contemporary.

## 07939002 - Usine



## Boussac

<b>PERFORMANCE</b>	High Rub Test
<b>TYPE</b>	-
<b>USE</b>	Intensive use
<b>MARTINDALE</b>	60.000 T
<b>COMPOSITION</b>	100 % Polyester
<b>SALES UNIT</b>	Available per meter/yard
<b>WIDTH</b>	138 cm / 54,33 inch
<b>REPEAT</b>	H: 1 cm - 0,39 inch V: 2 cm - 0,78 inch
<b>WEIGHT</b>	360 gr / ml
<b>CARE</b>	
<b>CERTIFICATIONS</b>	EN1021-1-2 in conjunction with suitable combustion modified foam NFPA 260-Class 1 CRIB 5 in conjunction with suitable combustion modified foam
<b>NOTES</b>	Reversible Can be embossed

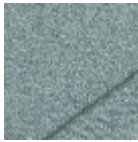
## 25 Colors



O7939001  
Grand large



O7939002  
Usine



O7939003  
Mistral



O7939004  
Sel



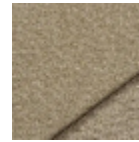
O7939005  
Levure



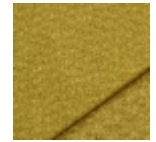
O7939006  
Ficelle



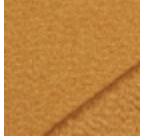
O7939007  
Jute



O7939008  
Acacia



O7939009  
Curry



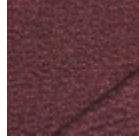
O7939010  
Mangue



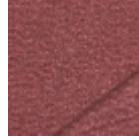
O7939011  
Courge



O7939012  
Matador



O7939013  
Griotte



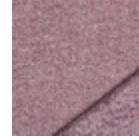
O7939014  
Tomette



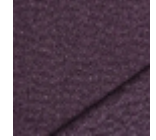
O7939015  
Porcelaine



O7939016  
Prunus



O7939017  
Primevère



O7939018  
Myrtille



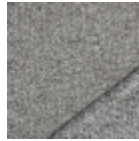
O7939019  
Alpaga



O7939020  
Pécan



O7939021  
Sous bois



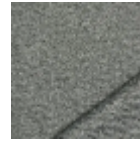
O7939022  
Métal



O7939023  
Tableau



O7939024  
Graphite



O7939025  
Ciment