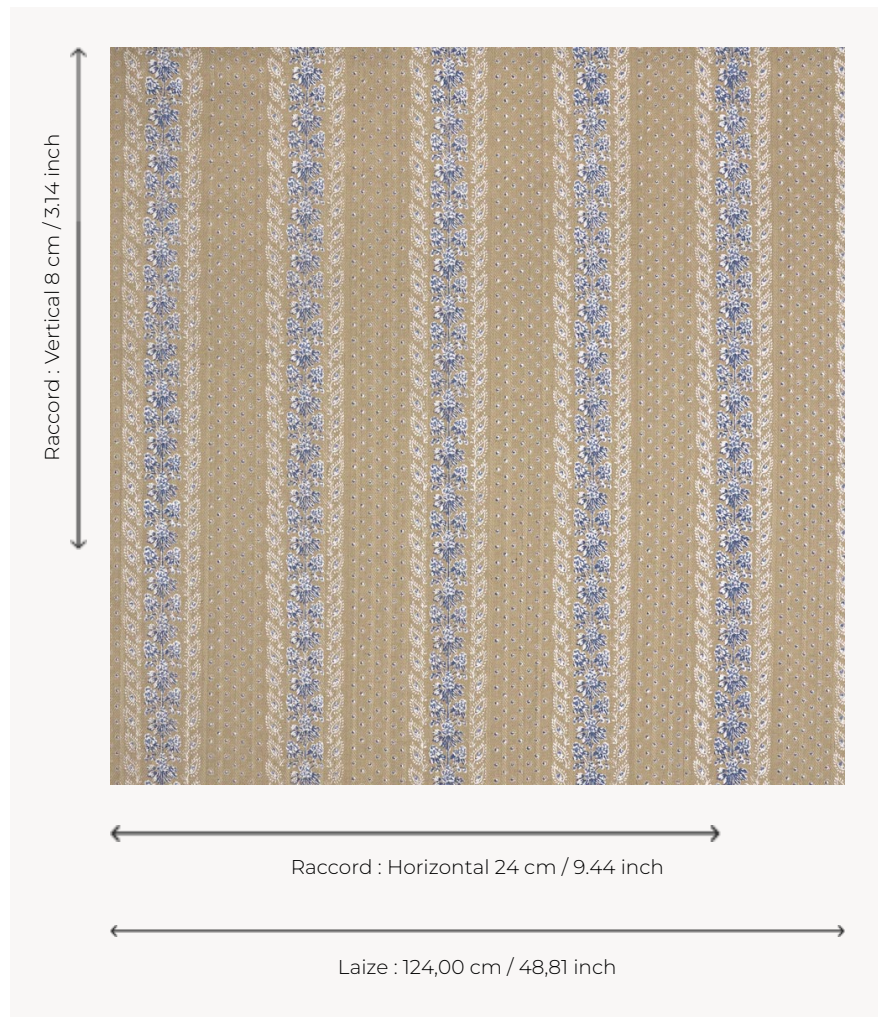


# T0043001 LINETTE

This printed pattern evokes the delicate embroidery that underlined early 19th-century dresses.

## T0043001 - Atlantic



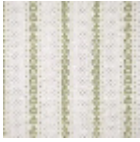
## Thorp of London

<b>TYPE</b>	Prints
<b>TECHNIQUE</b>	Screen printed by hand
<b>SALES UNIT</b>	Available per meter/yard
<b>GROUND</b>	TS027 - Edward Natural
<b>COMPOSITION</b>	100 % Jute
<b>NUMBER OF COLORS</b>	4
<b>COLORS</b>	A-WHITE 320 B-WHITE 320 C-ATLANTIC 186 D-CHINA 12
<b>DESIGN WIDTH</b>	124 cm / 48,81 inch
<b>REPEAT</b>	H: 24 cm - 9,44 inch V: 8 cm - 3,14 inch Straight repeat
<b>WEIGHT</b>	-
<b>CARE</b>	
<b>INFORMATION</b>	Hand screen printed

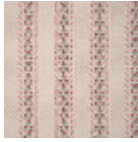
## 3 Colors



T0043001  
Atlantic



T0043002  
Elm



T0043003  
Calypso