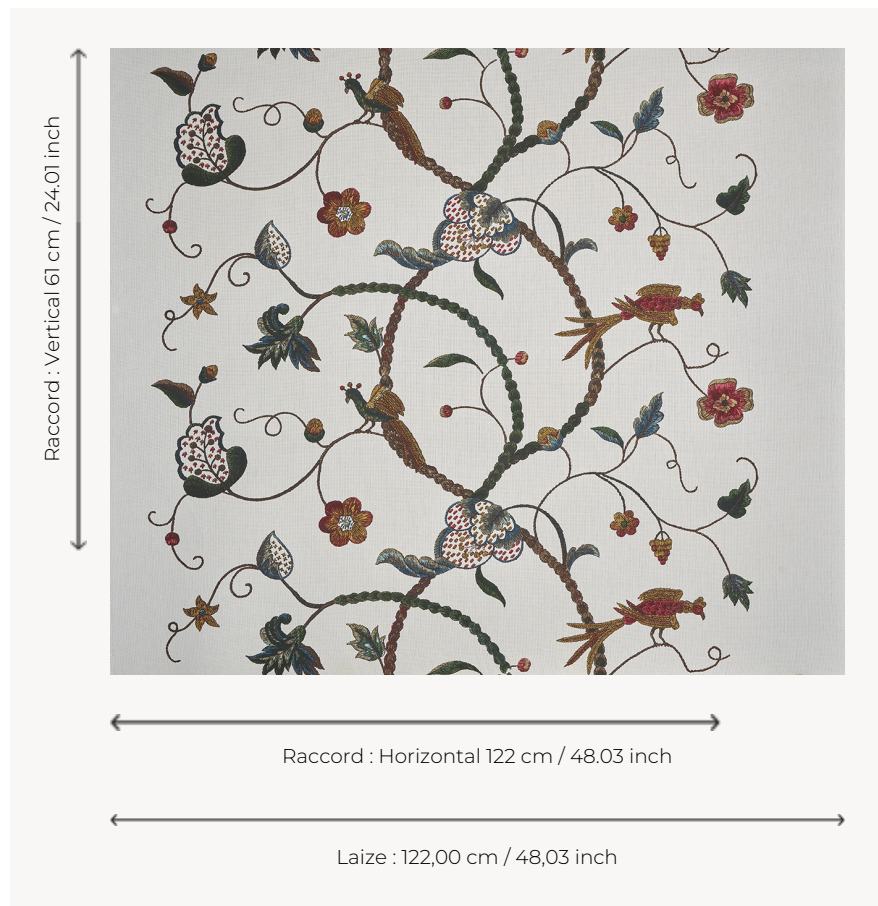


## T0067001 EMBROIDERY

Charming trompe-l'oeil of a Crewel embroidery in the Elizabethan style, made in the pure English tradition.

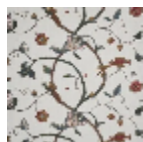
### T0067001 - Duck



### Thorp of London

<b>TYPE</b>	Prints
<b>TECHNIQUE</b>	Screen printed by hand
<b>SALES UNIT</b>	Available per meter/yard
<b>GROUND</b>	TS009 - James Off White
<b>COMPOSITION</b>	55 % Cotton - 45 % Linen
<b>NUMBER OF COLORS</b>	15
<b>COLORS</b>	A-CALYPSO 57 B-SEPIA 13 C-THATCH 14 D-BURGUNDY 121 E-RASPBERRY 38 F-CHESTNUT 118 G-MINT 44 H-PINE 137 I-STRAW 5 J-LAGOON 99 K-MOSS 2 L-WALNUT 176 M-DUCK 127 N-PUTTY 93 O-CAPRI 101
<b>DESIGN WIDTH</b>	122 cm / 48,03 inch
<b>REPEAT</b>	H: 122 cm - 48,03 inch V: 61 cm - 24,01 inch Straight repeat
<b>WEIGHT</b>	540 gr / ml
<b>CARE</b>	
<b>INFORMATION</b>	Hand screen printed

## 2 Colors



T0067001  
Duck



T0067002  
Aubergine