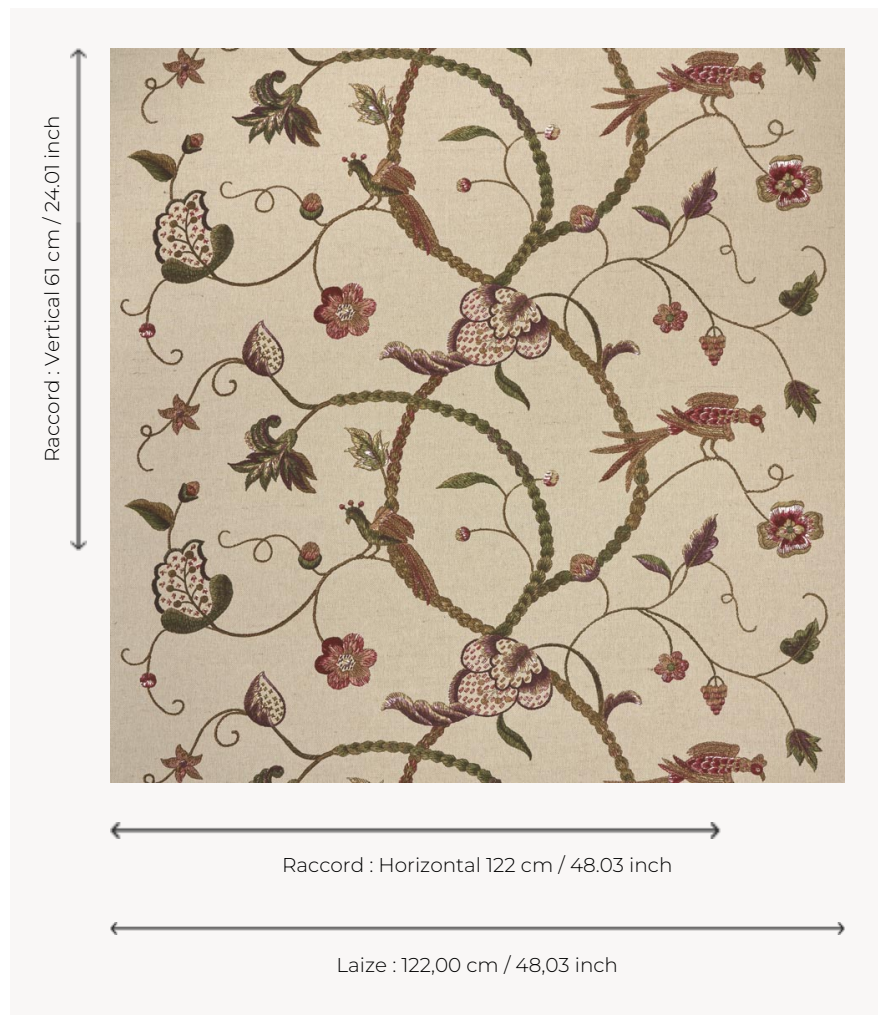


T0067002 EMBROIDERY

Charming trompe-l'oeil of a Crewel embroidery in the Elizabethan style, made in the pure English tradition.

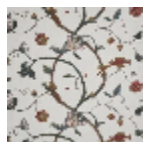
T0067002 - Aubergine



Thorp of London

TYPE	Prints
TECHNIQUE	Screen printed by hand
SALES UNIT	Available per meter/yard
GROUND	TS021 - Winston Natural
COMPOSITION	55 % Cotton - 45 % Jute
NUMBER OF COLORS	15
COLORS	A-WHITE 320 B-SAND 216 C-CAPPUCCINO 184 D-BURGUNDY 121 E-RASPBERRY 38 F-CHESTNUT 118 G-MATCHA 111 H-CACTUS 178 I-BERLINGOT 21 J-WHITE 320 K-ELM 109 L-THATCH 14 M-AUBERGINE 129 N-SAND 216 O-PETUNIA 130
DESIGN WIDTH	122 cm / 48,03 inch
REPEAT	H: 122 cm - 48,03 inch V: 61 cm - 24,01 inch Straight repeat
WEIGHT	449 gr / ml
CARE	
INFORMATION	Hand screen printed

2 Colors



T0067001
Duck



T0067002
Aubergine