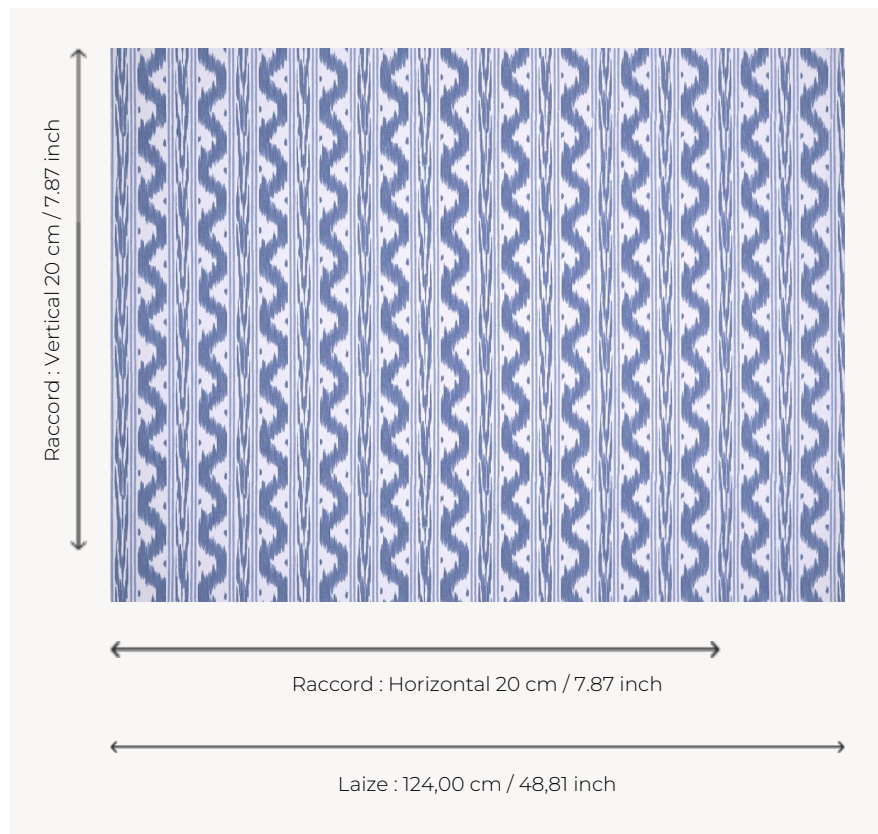


T0084002 PALMA SMALL THORP

This pattern reproduces the flamed or ikat fabrics traditionally produced in France. Most of these fabrics were used for bed linings or for lining the outer slopes, also known as lambrequins.

T0084002 - Atlantic



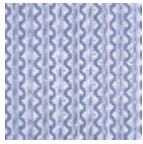
Thorp of London

| | |
|-------------------------|---|
| TYPE | Prints |
| TECHNIQUE | Screen printed by hand |
| USE | Normal use |
| MARTINDALE | 35.000 T |
| SALES UNIT | Available per meter/yard |
| GROUND | TS002 - Bradley White |
| COMPOSITION | 100 % Cotton |
| NUMBER OF COLORS | 2 |
| COLORS | A-ATLANTIC 186 B-DELFT 394 |
| DESIGN WIDTH | 124 cm / 48,81 inch |
| REPEAT | H: 20 cm - 7,87 inch V: 20 cm - 7,87 inch Straight repeat |
| WEIGHT | 361 gr / ml |
| CARE | |
| INFORMATION | Hand screen printed |

4 Colors



T0084001
Celadon



T0084002
Atlantic



T0084003
Cameo



T0084004
Foam